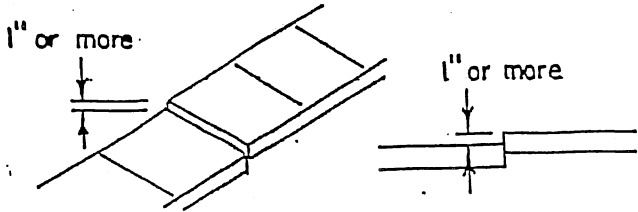
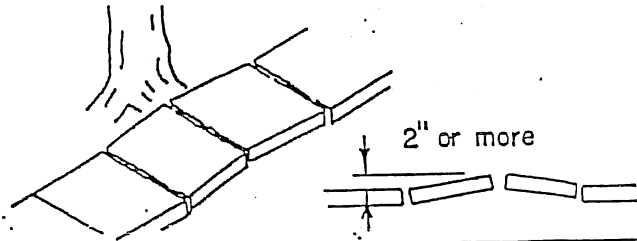


# STANDARDS FOR DEFECTIVE SIDEWALKS CITY OF MARION IOWA



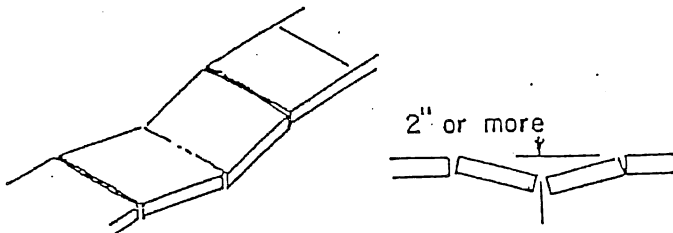
## REPAIR CODE "A"

The sidewalk is cracked with a vertical edge existing of more than one inch high.



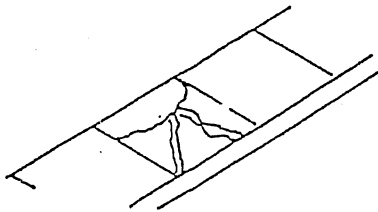
## REPAIR CODE "B"

The sidewalk has raised more than two inches in a eight to ten (8'-10') foot area from the normal line of grade of the sidewalk.



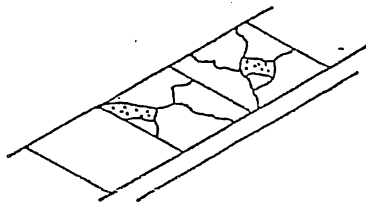
## REPAIR CODE "C"

The sidewalk is depressed more than two inches in a eight to ten (8'-10') foot area from the normal line of grade of the sidewalk.



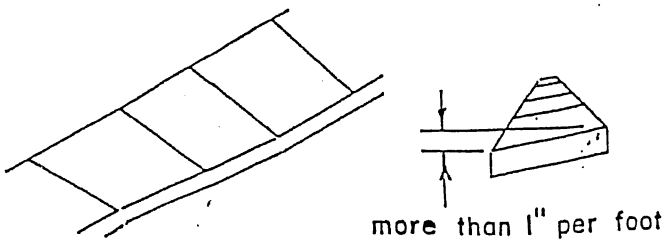
## REPAIR CODE "D"

The sidewalk has cracked into more than three pieces per 4' x 4' square and sections are distorted or distressed with a vertical height difference of one-half inch or more or a horizontal separation of two inches or more.



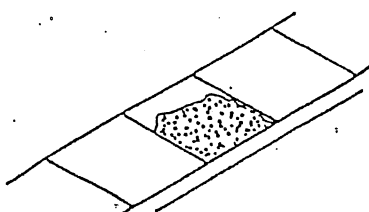
## REPAIR CODE "E"

The sidewalk has cracked and part of the sidewalk is missing, forming holes.



## REPAIR CODE "F"

The sidewalk has settled or for some other reason is sloped and tilted more than one inch per foot (toward either side).



## REPAIR CODE "G"

The sidewalk has spalled and the depth of any point of the spalled area is 1" or greater.