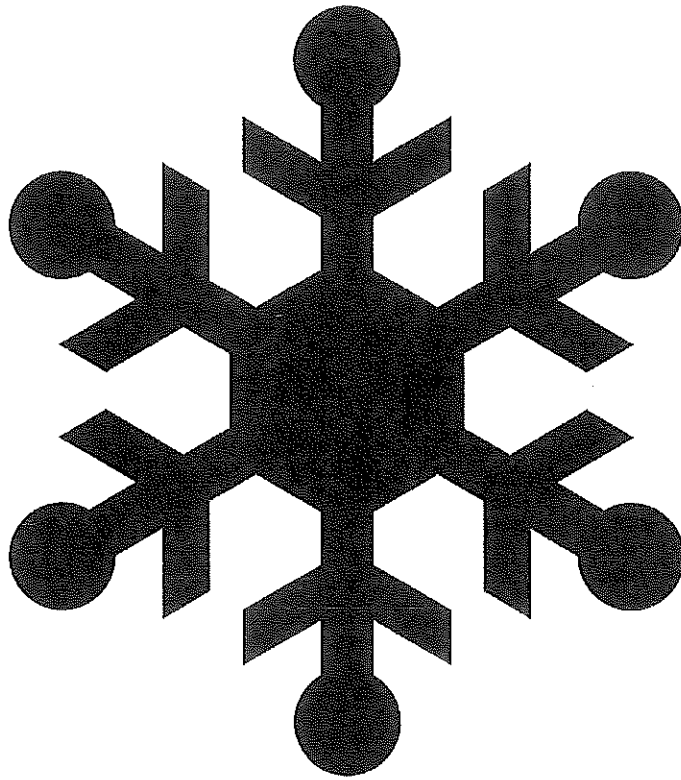


SANDING AND PLOWING PROCEDURES  
CITY OF MARION PUBLIC SERVICES



Snow and Ice Program

2023-24

**CITY OF MARION, IOWA  
SNOW AND ICE PROGRAM  
2023 / 2024**

**SECTION 1. INTRODUCTION:**

The Public Service Department is responsible for providing snow and ice control for the city streets and the cities designated snow routes. It is the intent of the Snow and Ice Program to establish general policies and procedures to make travel within the City as safe as possible.

The City does not guarantee that streets will be free of snow and ice after plowing. Bare dry pavement should not be expected and will not be provided. The City attempts to maintain adequate traction for vehicles properly equipped for winter driving conditions.

**SECTION 2. CLASSIFICATION OF STREETS:**

**PRIORITY ONE.** The streets designated **PRIORITY ONE** includes all **SNOW ROUTES** within the City as established by the City Council. (See appendix "A"). Also, included are extensions of **SNOW ROUTES** outside of Marion's corporate limits as agreed between the City of Marion and adjacent jurisdictional governments. (See appendix "B" and "C").

2.2 **PRIORITY TWO.** The streets designated as **PRIORITY TWO** include the Central Business District and certain streets serving business/commercial areas. The Central Business District streets and alleys are within the boundaries of 9<sup>th</sup> Street, 9<sup>th</sup> Avenue, 13<sup>th</sup> Street and 6<sup>th</sup> Avenue. Streets serving business/commercial areas include the following:

- |     |  |     |  |
|-----|--|-----|--|
| 1.  | Lyons Lane   | 13. | 49 <sup>th</sup> St – 6 <sup>th</sup> to 8 <sup>th</sup> Ave       |
| 2.  | Industrial Avenue                                      | 14. | 51 <sup>st</sup> St- 6 <sup>th</sup> to 8 <sup>th</sup> Ave        |
| 3.  | Beall Ct (Kwik Star)                                   | 15. | 6 <sup>th</sup> Ave – 49 <sup>th</sup> to 51 <sup>st</sup> Streets |
| 4.  | 4 <sup>th</sup> Avenue east of 35 <sup>th</sup> Street | 16. | 6 <sup>th</sup> Ave – 13 <sup>th</sup> to 15 <sup>th</sup> Streets |
| 5.  | Commercial Avenue                                      | 17. | So. 12 <sup>th</sup> Street- A Ave to Grand Ave                    |
| 6.  | Katz Drive, to Fire #2                                 | 18. | Cemar Court  |
| 7.  | Commercial area-Linn Aire and 62 <sup>nd</sup> Street  | 19. | Armar Drive-North of Highway 100                                   |
| 8.  | Linden Drive   | 20. | Irish Drive-Irish Ct to Lowe Park entrance                         |
| 9.  | Cardinal Drive   | 21. | 50 <sup>th</sup> St- 29 <sup>th</sup> Ave to Prairie Ridge Ave     |
| 10. | Menard Ln.   | 22. | Airport Rd east just past Airport's second drive                   |
| 11. | Oakbrook Dr.   | 23. | Learning Lane 35 <sup>th</sup> Ave to north end                    |
| 12. | Oak Ln.  |     |  |

2.3 **PRIORITY THREE.** The streets designated as **PRIORITY THREE** include streets in residential areas with cul-de-sacs and dead end streets being finished last.

2.4 **PRIORITY FOUR.** The streets designated as **PRIORITY FOUR** include alleys.

**SECTION 3. LEVEL OF SERVICE:**

3.1 **PRIORITY ONE STREETS.** Plowing should generally begin on **PRIORITY ONE** streets when the accumulation of snow on the roadway exceeds one (1) inch. The roadway accumulation is generally independent of the total accumulation of snow in the area. **PRIORITY ONE** streets should be plowed curb to curb before plowing proceeds to any other areas. Salt, sand and/or materials will be applied when it is determined by the Public Services Director or the Director's designee that sufficient snow and/or ice exist throughout the City.

3.2 **PRIORITY TWO STREETS.** Plowing of **PRIORITY TWO** streets should begin when accumulations of snow on the roadway itself exceeds one (1) inch and after all **PRIORITY ONE** streets have been plowed. Sand, salt and/or materials will be applied to the streets when it is determined by the Public Services Director or the

Director's designee that sufficient snow and/or ice exist throughout the City. When plowed snow has accumulated to the point that on street parking becomes impractical, the accumulated snow should be hauled from the Central Business District area. The hauling of this accumulated snow should only be initiated following the completion of snow plowing operations of PRIORITY ONE, TWO and THREE streets and this operation will normally be accomplished during the overnight hours to avoid traffic. The City may contract with private haulers for the removal of such accumulated snow.

- 3.3 PRIORITY THREE STREETS. Plowing operations should begin on these streets when the accumulation of snow on the roadway itself exceeds two (2) inches and after the completion of plowing operations on PRIORITY ONE and TWO streets. Sand, salt and/or materials will normally be applied only to hills, school access streets and problem intersections as identified by the Public Services Director or the Director's designee and only following the determination that sufficient snow and/or ice exists throughout the City. Certain streets in this classification, due to their particular geometric design (dead ends, cul-de-sacs, etc.) should be plowed independently from the other streets in town.
- 3.4 PRIORITY FOUR STREETS. The City will not plow streets in this category.
- 3.5 CITY BUS SHELTERS. All City bus shelters should be cleared by the Parks Department and every possible measure will be taken to have them cleared within 24 hours of a snowstorm.
- 3.6 CENTRAL BUSINESS DISTRICT. Snow will be cleared from the CBD area when there is a sufficient accumulation that constricts parking and/or available sidewalk area. Snow will generally be removed during a nighttime shift a day or two following completion of all other plowing operations. In locations where snow has been piled in parking spots, or in furrows in the middle of the road, it will be hauled as soon as possible after the storm has ended and all other areas have been plowed and generally during normal working hours.
- 3.7 CENTRAL CORRIDOR. Pavers and pavement materials utilized within the Central Corridor located between 9<sup>th</sup> Street and 12<sup>th</sup> Street will require alternative methods for snow and ice removal. Public Service shall equipped one truck equipped with a polyurethane blade or rubber cutting edge and shall be assigned specifically to this area for snow and ice removal. Conventional roadway deicers will be utilized unless otherwise directed by the Public Services Director.

#### SECTION 4. SNOW AND ICE CONTROL PERSONNEL:

- 4.1 Snow and/or ice removal operations will be conducted on a 24 hour basis, seven days a week as needed. Equipment operators and supervisors should also be ready to commence snow and/or ice removal operations at any time it is determined that operations must begin.
- 4.2 Responsibility for snow removal operations will be that of the Director's designee. There will always be one (1) person at a time in charge of operations and that person will have all authority and responsibility to conduct snow/ice control operations as outlined in this policy.
- 4.3 If the decision to commence snow and/or ice removal operations is made during the normal work day, operators and supervisors shall be prepared to cease the activities they are engaged in and begin snow and/or ice removal preparations and operations.
- 4.4 If the conditions become such that snow and/or ice removal must begin after normal working hours, the designated supervisor, who will then make an inspection of streets and determine the necessary actions to be taken.
- 4.5 The supervisor in charge shall coordinate all rest periods and breaks until all PRIORITY ONE streets have been plowed. Employees will normally be limited to a maximum of 16 hours of continuous snow plowing. This is in consideration of the safety of the operator, the public and liability exposure to the City. Employees may be requested to work longer than 16 hours during any WINTER STORM EMERGENCY.

SECTION 5. SNOW PLOWING AND ICE CONTROL OPERATIONS:

- 5.1 There are several factors to consider when deciding whether snowplowing operations should commence. The general rule to be used however, is when accumulations are expected to be more than one inch and snow is falling or forecasts predict additional snowfall, operations should commence.
- 5.2 Every street in the City will be assigned a plowing priority classification. In any given area, PRIORITY ONE streets will be plowed before PRIORITY TWO or THREE streets are started. If operations have begun on PRIORITY TWO or THREE streets and it continues to snow with sufficient additional accumulation to require re-plowing, then PRIORITY ONE streets will be re-plowed before resuming plowing operations on PRIORITY TWO or THREE streets. An attempt will be made to plow PRIORITY TWO streets in conjunction with PRIORITY ONE streets, however, if this cannot be accomplished, PRIORITY TWO streets will take precedence over PRIORITY THREE streets.
- 5.3 All supervisors and equipment operators are expected to know the areas they are assigned to plow and the location of the sidewalks in the area. In areas where sidewalks are close to the curb, equipment operators will make every effort possible to avoid plowing snow onto the sidewalks, but conditions do not allow this at all times. City crews will not clean sidewalks in residential neighborhoods.
- 5.4 Equipment operators are responsible for their equipment and shall inspect this equipment prior to beginning plowing operations to insure it is in proper working order. All malfunctions must be reported to the supervisor. When a vehicle is out of service the supervisor may make vehicle reassignments in order to plow other areas.
- 5.5 Fueling of equipment will occur at the end of each shift to prepare for the next shift's operation. In the event fueling becomes necessary before the end of the shift, such fueling will be staggered to avoid unnecessary congestion at the fuel pumps.
- 5.6 Equipment operators shall obey ALL traffic laws during snow plowing and sanding operations. Snow plows do not have the authority to run traffic lights or stop signs.
- 5.7 Operators who are involved in an accident are required to report the accident immediately to their supervisor and the Police Department. Operators must also complete an accident report and submit it to their supervisor before the end of their shift.
- 5.8 Supervisors are required to submit snow reports at the end of each shift and periodically throughout the shift. Items to be included in these reports are:  
Date, Time and Duration of Shift  
Wind Velocity  
Route  
Operators  
Tons of Material Spread  
Spreading Time  
Breakdowns  
Percentage of Route Completed  
Any Deviations from the Assigned Route  
Reason For the Deviation  
Other Applicable Comment

SECTION 6. SNOW EMERGENCIES:

- 6.1 The Public Services Director, in consultation with the City Manager, shall initiate a SNOW ROUTE PARKING BAN or WINTER STORM EMERGENCY. When a snowfall event with two (2) or more inches of snow is expected, the SNOW ROUTE PARKING BAN may be declared and all vehicles will be required to be removed from declared "Snow Routes". When a snow event of more than four (4) inches is expected a WINTER STORM EMERGENCY may be declared and all vehicles will be required to be removed from all city streets except those that have an approved permit to park on the street. When either the declaration or emergency has been declared, all radio and television stations shall be informed as soon as possible. (See appendix "B"). The SNOW ROUTE PARKING BAN and WINTER STORM EMERGENCY will remain in effect until all media has been notified that is being lifted.

- 6.2 The Fire Department, Police Department and City Hall shall be notified when a SNOW ROUTE PARKING BAN or WINTER STORM EMERGENCY has been declared.
- 6.3 The Police Department shall have primary responsibility for the enforcement of the parking provisions of the SNOW ROUTE PARKING BAN or WINTER STORM EMERGENCY ordinance. This shall include ticketing and/or towing of illegally parked vehicles.
- 6.4 Parking Permits to park on city streets during snow removal operations, or to designate certain streets exempt are available at the Public Services Department. Such permits may be granted for those individuals that do not have a driveway or available off street parking or are in need of on street parking due to medical or physical conditions. Permits will be investigated on a case by case basis and would have to be renewed yearly by December 1<sup>st</sup>.

#### SECTION 7. SNOW ROUTE MAPS:

Maps indicating all PRIORITY ONE streets will be kept at the Public Services Department, City Hall, Police and Fire Departments.

#### SECTION 8. RIGHT OF WAY:

##### 8.1 MAILBOX and/ or RIGHT OF WAY DAMAGE

While mailboxes are permitted to be installed in the public right of way, the mailbox owner assumes all risk of damages except when it is damaged from a direct hit from a truck or snow plow. If damages occur from a direct hit from a truck or plow, the city will, at its option, repair or replace the mailbox and post. If damage occurs from snow and ice rolling off a plow, the responsibility for repair or replacement will be with the homeowner. Any landscaping, irrigation heads, lighting systems and other objects placed within the public right of way will be the responsibility of the homeowner. Sod removed by a plow or wing will be repaired in the spring by city crews using good black dirt and seed, watering will be by the homeowner. Any inanimate object placed within the public right of way either permitted or un-permitted that could cause damage to snow plow equipment will have to be removed at the owners expense. Failure to remove after notice will be removed by the city at the owners' expense.

All Mailbox and Right of Way Damage claims shall be reviewed and decided upon by the Public Services Board.

##### 8.2 SNOW STORAGE and REMOVAL

Ongoing snow and ice efforts require the use of the entire public right of way for storage of plowed snow. Depending on the volume of snow and rate of occurrences, available storage within the right of way can be limited and / or create sight obstructions. It will be the responsibility of the city to remove or wing back such snow in the right of way. Snow and ice that is placed in the driveways as a result of plowing operations is expected and unavoidable. City crews will not provide driveway cleaning under any circumstances. Snow and ice placed around a homeowner's mailbox will be the responsibility of the homeowner.

## SECTION 9. CONTRACTOR PERMITTING

The City of Marion will issue permits to private contractors engaged in winter snow and ice operations. The permits will be available at the Public Services Department at 195 35<sup>th</sup> Street. The cost of the annual permit will be Twenty-Five (\$25.00) dollars and the contractor must provide a list of properties they will be performing removal services for. Issuance of permits for snow removal will be determined by the Public Services Director or his/her designee. Failure to obtain the permit may result in civil penalties that are outlined in the City Code of Ordinances. Violations of permits may result in forfeiture of the permit or eligibility to obtain a permit.

### APPENDIX "A" SNOW ROUTES

1.	1st Avenue	11th Street to 31st Street
2.	1st Street	3rd Avenue to Marion Blvd.
3	3rd Avenue	1 <sup>st</sup> to 44 <sup>th</sup> Street
4.	5th Avenue	1st Street to 31st Street
5.	6th Avenue	1st Street to 7 <sup>th</sup> Avenue & 26 <sup>th</sup> Street round about
6.	7th Street	6 <sup>th</sup> to 9 <sup>th</sup> Avenue
7.	8th Avenue	44th Street to Wal-Mart
8.	8th Avenue	Indian Creek Bridge to 31st Street
9.	10th Avenue	10th Street to 35th Street
10.	10th Street	5 <sup>th</sup> Avenue to North City Limits
11.	11th Street	1st Avenue to 6th Avenue
12.	12th Street	3 <sup>rd</sup> Avenue to 8th Avenue
13.	13th Street	5th Avenue to 8th Avenue
14.	14 <sup>th</sup> Street	4 <sup>th</sup> to 5 <sup>th</sup> Avenues
15.	14th Street	7th Avenue to McGowan Blvd.
16.	15th Street	7 <sup>th</sup> Avenue to So 15 <sup>th</sup> St. Court
17.	22nd Street	7th Avenue to 10th Avenue
18.	22nd Street	6th Avenue to South to Hwy #100
19.	24th Street	10th Avenue to 29th Avenue
20.	25th Avenue	Indian Creek Road to 35th Street
21.	27th Street	8th Avenue to 28th Avenue
22.	29th Avenue	Alburnett Road to Hwy #13
23.	31st Street.	HWY 100 to Abbey Rd.
24.	35th Street	Munier Rd. to Indian Creek Rd.
25.	44th Street	35 <sup>th</sup> Ave to Hwy # 100
26.	50th Street	8th Avenue to Prairie Ridge Ave.
27.	Alburnett Road	Central Avenue to Cedar Springs Rd
28.	US Business Route #151	Hwy #13 to Tama Street
29.	Alpine Road	Linnview Drive to West 14th Avenue
30.	Blairs Ferry Road	Marion Blvd. to Northland Drive
31.	Boyson Road	10 <sup>th</sup> street to West City Limits
32.	Brockman Avenue	10th Street to 24th Street
33.	Central Avenue	10th Street to Alburnett Road
34.	East Post Road	Grand Avenue to South City Limits
35.	Elim Drive	Grand Avenue to south end
36.	Elm Street	West 14th Street to Parkview Drive
37.	Geode St.	29 <sup>th</sup> Ave. to Alburnett Road
38.	Grand Avenue	31 <sup>st</sup> St. to Creekbend Dr.]

### APPENDIX "A" SNOW ROUTES

39.	Indian Creek Road	10th Street to Winslow Road
40.	Lindale Drive	Parkview Dr. to south end

41.	Linnview Drive	West 8th Avenue to Alpine Road
42.	McGowan Blvd	10th Street to 44 <sup>th</sup> Street
43.	Munier Road	31st Street to Highway #100
44.	Parkview Drive	Elm Street to West 8th Avenue
45.	South 11th Street	Grand Avenue to 1st Avenue
46.	Twix Town Road	HWY 100 to Marion Blvd.
47.	Valley Park Street	Grand Avenue to south end
48.	West 14th Avenue	Alpine Road to Elm Street
49.	West 8th Avenue	Indian Creek Bridge to Linnview Drive
50.	Windmere Way	35th Street to 44 <sup>th</sup> Street
51.	Winchester Drive	29 <sup>th</sup> Avenue to McGowan Blvd.
52.	West 33rd Avenue	Alburnett Rd. to 3 <sup>rd</sup> Street
53.	Prairie Ridge Ave	50 <sup>th</sup> Street to Bluegrass St.
54.	9 <sup>th</sup> Avenue	12 <sup>th</sup> to 14 <sup>th</sup> Streets
55.	28 <sup>th</sup> Avenue	24 <sup>th</sup> to 27 <sup>th</sup> Streets
56.	9 <sup>th</sup> Ave	6 <sup>th</sup> to 7 <sup>th</sup> Streets
57.	Tower Terrace	Winslow Road to 35 <sup>th</sup> Street
58.	Tower Terrace	Alburnett Road to Winslow Road
59.	49 <sup>th</sup> Street	6 <sup>th</sup> to 8 <sup>th</sup> Avenue
60.	6 <sup>th</sup> Street	8 <sup>th</sup> to 9 <sup>th</sup> Ave
61.	51 <sup>st</sup> Street	6 <sup>th</sup> to 8 <sup>th</sup> Avenues
62.	6 <sup>th</sup> Avenue	49 <sup>th</sup> to 51 <sup>st</sup> Streets
63.	Willowood Ave.	35 <sup>th</sup> to 41 <sup>st</sup> Street
64.	41 <sup>st</sup> Street	Willowood Avenue To McGowan Blvd.
65.	9 <sup>th</sup> Street	6 <sup>th</sup> to 7 <sup>th</sup> Ave
66.	South 26 <sup>th</sup> Street	Pleasantview Dr. to Hillview Drive
67.	Pleasantview Drive	South 15 <sup>th</sup> to South 26 <sup>th</sup> Streets
68.	Meadowview Drive	East Post Road to South 15 <sup>th</sup> Street
69.	Hillview Drive	Meadowridge to South 26 <sup>th</sup> Street
70.	Meadowridge Drive	Hillview Drive to Bullis Dr
71.	A Avenue	South 11 <sup>th</sup> to South 22 <sup>nd</sup> Streets
72.	F Avenue	South 11 <sup>th</sup> to South 14 <sup>th</sup> Streets
73.	South 14 <sup>th</sup> Street	A to F Avenues
74.	Lucore Road	Indian Creek Road to Royal Oak Ridge Drive
75.	Hunters Ridge Road	Winslow to Lucore Roads
76.	Winslow Rd.	Glen Rock Drive to Indian Creek Rd/Tower Terrace Rd
77.	Edinburgh Avenue	Alburnett Road to Victoria Street
78.	Victoria Street	Newcastle Rd to Edinburgh Ave.
79.	Newcastle Road	Boyson Rd. to East Robins
80.	East Robins Road	Alburnett Road to West City Limits
81.	Kacena Ave.	Prairie Hill Dr. to Scott Street
82.	Echo Hill Road	Ridge Stone Rd to east end of pavement
83.	A Ave.	So. 11 <sup>th</sup> St. to Pennington Drive
84.	Pennington Dr.	A Ave to Alexis Lane
85.	Alexis Lane	Raleigh Lane to Bullis Drive
86.	Bullis Drive	Alexis lane to Meadow Ridge Blvd
87.	Raleigh Lane	Pennington Drive to Alexis Lane
88.	Connection Blvd.	Winslow Rd. to N. 10 <sup>th</sup> St.
89.	Tower Terrace Road	North 10 <sup>th</sup> Street to Alburnett Road
90.	62 <sup>nd</sup> Street	Hwy 151 to North Gateway Drive
91.	North Gateway Drive	62 <sup>nd</sup> Street to Partners Avenue
92.	Partners Avenue	North Gateway Drive to Hwy 151
93.	35 <sup>th</sup> Ave	35 <sup>th</sup> St to HWY 13
94.	Limden Drive	7 <sup>th</sup> Ave to Sunburst Avenue
95.	Sunburst Avenue	Linden Dr to 35 <sup>th</sup> St
96.	Abbey Road	31 <sup>st</sup> St to Lennon Lane
97.	Lennon Lane	Abey Road to Tower Terrace Road

APPENDIX "B"  
AGREEMENT BETWEEN CITY OF MARION AND LINN COUNTY  
LINN COUNTY ROUTES

Indian Creek Road	North from Lucore Road intersection
22nd Street	South from Highway #100
Alburnett Road	Cedar Springs Road to the North
East Robins Road	Normandy Drive N.E. to West
Winslow Road	County Home Rd. south to Cottage Ridge Drive
Secrest Road	Highway #13, East
No. 10 <sup>th</sup> Street	South to Shamrock Woods
Artisian Road	Lucore Road to the east
Big Springs Road	Hwy 13 east to city limits
Echo Hill	Artesian Road to Hwy 13
Echo Hill Road	Ridge Stone Road west to city limits
White Gate Court	N. 10 <sup>th</sup> St. to City Limits
Marion Airport Rd	East of second airport driveway
Fernow Road	Fields Drive east

CITY of MARION ROUTES

Alburnett Road	Tower Terrace Road to Cedar Springs Road.
29th Avenue	Indian Creek Road east to Highway #13
North 10th Street	City Limits north to Shamrock Woods
East Post Road	City limits south to 30 <sup>th</sup> Street Drive
Lucore Road	Indian Creek Rd., north to Royal Oak Ridge Drive
Munier Road	Iowa Highway #100 to 31 <sup>st</sup> St.
East Robins Road	Alburnett Road to Normandy Drive N.E.
Winslow Road	Indian Creek Rd. to Glen Rock Circle
Marion Airport Road	Hwy 151 East to East Airport Driveway
35 <sup>th</sup> Avenue	35 <sup>th</sup> Street to Hwy 13
Shamrock Woods	North 10 <sup>th</sup> St to east
Diamond Drive	North of 30 <sup>th</sup> Street Drive
Orrian Drive	North of 30 <sup>th</sup> St Drive
Fernow Road	Hwy 13 east to Fields Drive

APPENDIX "C"  
AGREEMENT BETWEEN CITY OF MARION AND CITY OF CEDAR RAPIDS  
CITY of CEDAR RAPIDS ROUTES

3rd Avenue	33rd Street Drive to 35th Street Drive
Tama Street	US Business #151 south to dead end
Adel Street	Marion City Limits, north to dead end
Northland Avenue	Blairs Ferry Road, south to Marion City Limits
Plumwood Court	Marion City limits, east to cul-de-sac
Armar Drive	US Business #151 south to Marion City Limits

CITY OF MARION ROUTES

Boyson Road	Marion City Limits, west to Brentwood Drive
Lindale Drive	Blairs Ferry Road south to Twixtown Road
Blairs Ferry Road	Lindale Drive, west to Marion City Limits
Twixtown Road .	US Business #151 to Lindale Drive
Tama Street	Highway #100 to south end
100 foot connector	Twixtown Road to Highway 100 feet
Frontage Road	Lindale Drive to Twixtown Road
Cemar Court	Armar Drive to Cul-de-Sac
Briargate Drive	Hawks Ridge Lane to Beckett Drive



## PUBLIC SERVICE DEPARTMENT

### SANDING & PLOWING PROCEDURES WINTER 2023 /2024

- I. SANDING OPERATIONS:
- A. When road conditions become such that sanding and salting may become necessary the Designated Supervisor will be called in to monitor road conditions. When the Supervisor deems it necessary to begin sanding operations, the necessary personnel will be utilized by to adequately staff for operations. Typically, sanding operations will include (10) ten Equipment Operators and a Mechanic will be called in to sand all routes and secondary areas. (6) Six trucks will sand north side routes. (3) Three trucks will sand south side routes.
  - B. Sanding will be done in the following order. Priority (1) streets - priority (2) streets and additional areas. Sanding will be done at intersections – hills – schools. Operators are to turn on sanding units 100 ft. ahead of an intersection sand through the intersection and shut sanding unit off 100 ft after the intersection. Sanding will normally be done at a rate of 300 lbs. per lane mile. Application of material will be determined by the supervisor in charge. Typically, full material application along the entire route will take place after or at the end of winter storm event unless otherwise determined by the supervisor. The supervisor will instruct operators when rate changes are to be made.
  - C. Truck dump boxes shall not be driven with the box raised.
  - D. Operators are required to call in when they have finished their route. After completion of the route the operator will receive instructions from the supervisor as to the next locations to be sanded.
  - E. During sanding operations the Supervisor on duty, will assign the mechanic to duties in the best interest of the overall operations.
  - F. Unless extraordinary circumstances are apparent, it will be the expectation that an individual who is called in for overtime for snow removal operations will report to work within a one hour time frame.
  - G. In certain events, scheduling for snow removal operations will be completed before the end of normal working hours. This may include the scheduling of personnel to remain on-call during a designated time period.
  - H. Spot sanding calls will be handled by a Supervisor and the Equipment Operator.

## II. MATERIALS AND MIXTURES :

- A. Sand/salt mixture and salt will be mixed and stocked piled in storage building. Salt will be mixed with sand at a rate to be determined by the supervisor.
- B. The Supervisor in charge will advise operators when to adjust salt and sand mixtures do to changing road conditions.
- C. Supervisor will advise when pre-wet system will be used. Brine will be added to sand/salt materials as temperatures dictate. Magnesium Chloride may be used in lieu of brine, depending on availability of salt this year.
- D. As mixtures are applied to the road way operators must make the best attempt possible to place material from the spinner to the crown of the road.

## III. PLOWING OPERATIONS:

- A. During winter snowplowing operations the City will take a **Pro Active** approach to snow plowing. When conditions are such that plowing becomes necessary we will respond by using all equipment available from the beginning of the storm.
- B. Plowing of streets will be done on a priority bases they are as follows.
  - (1) Snow Routes.
  - (2) Business and Commercial areas
  - (3) Residential
  - (4) Cul-de-sac's – Dead Ends
- C. **Snow Routes:** We will have **(10) plowing routes**. We will plow on snow routes until snow has stopped and all routes are completed. Operators are **required** to call in when they have finished their route. After completion of the route the operator will receive instructions from the supervisor as to the next locations to be plowed.
- D. **C.B.D. & Commercial areas:** These areas will be plowed after snow routes are completed. Operators will be assigned to these areas by the supervisor in charge.
- E. **Residential Areas:** Will be plowed in tandem when possible. Operators will be assigned an area to plow in. Operators are expected to know the areas they are

assigned to plow and the location of sidewalks and other problems in their areas. Residential areas are color coded and divided into zones. Operators are **required** to call in when **starting** and **finishing** a zone and when their plowing area has been completed.

- F. **Cul-de-sac's:** Will be plowed out with small plowing units when ever possible snow should be **piled to either side of drives**. If this can not be done the operator should **call in the problem area**. After the storm has passed we will remove the snow by truck and loader. **Larger trucks** will make a pass in and out of the Cul de Sac.

Operators shall do their best to carry snow out of **median cul de sacs** and placing snow loadings along open right of ways as instructed by the Supervisor. This will allow for the proper refuge and management of snow loadings.

A rock turn around shall be addressed in the same fashion as cul de sacs with the exception that Operators are to avoid plowing granular material back onto the roadway.

- G. **Intersections:** Major intersections on snow routes will be cleared using a smaller plow truck. Intersections will be divided up into north and south side routes. The supervisor will assign routes, as trucks become available. **An intersection route list will be given to the operator at this time.**

#### IV. **EQUIPMENT & TRUCK ASSIGNMENTS;**

- A. The following is a list of equipment to be used during sanding and plowing operations. Operator assignment to the unit will be contingent on: call in factors (OT list), time that operator shows up for work and priority of open routes at that time.

#13 -	#57 -
#15 -	#58 -
#39 -	#59 -
#40 -	#60 -
#41 -	#61 -
#42 -	#62 -
#43 -	#63 -
#44 -	#64 -
#45 -	#65 -
#46 -	#66 -
#47 -	#67 -
#48 -	#70 -

- #49 –
- #50 –
- #51 –
- #52 –
- #53–
- #54 –
- #55 –
- #56 –

**B. SUPERVISORS & OTHER DIVISIONS' OPERATORS WILL BE ASSIGNED TO EQUIPMENT AS NEEDED**

**C. SANDING ROUTE EQUIPMENT ASSIGNMENTS:**

- N. SIDE SILVER ROUTE - #60
- N. SIDE RED ROUTE - #50
- N. SIDE BLACK ROUTE - #58
- N. SIDE BLUE ROUTE - #51
- N. SIDE PUPLE ROUTE - #57
- N. SIDE YELLOW ROUTE - #55
- N. SIDE BROWN ROUTE - #59
- S. SIDE GREEN ROUTE - #52
- S. SIDE ORANGE ROUTE - #53
- S. SIDE PINK ROUTE - #56

**D. SNOW ROUTE EQUIPMENT ASSIGNMENTS:**

**NORTH SIDE ROUTES:**

- RED ROUTE - #50 - #66
- BLACK ROUTE - #58 - 70
- BLUE ROUTE - #51- #44
- PURPLE ROUTE – #57- #46
- YELLOW ROUTE - #55 - #45
- BROWN ROUTE - #59 - #54
- SILVER ROUTE - #60

**SOUTH SIDE ROUTES:**

- ORANGE ROUTE -#53 - #48
- GREEN ROUTE - #52 - #40
- PINK ROUTE - #56 - #62

**RESIDENTIAL AREAS:**

- GREEN AREA (SECTIONS 1&2) – #58

GREEN AREA (SECTIONS 3&4) - #51  
 BLUE AREA - #53  
 YELLOW AREA – #50 - #59  
 PURPLE AREA (SECTIONS 1&2) - #57  
 PURPLE AREA (SECTIONS 3, 4&5) - #55 - #60  
 GOLD AREA - #56  
 PINK AREA - #52  
 PURPLE AREA (SECTIONS 3 – 4) - #60

**CUL DE SACS & INTERSECTIONS :**

**Areas will be assigned by the supervisor in charge**

UNIT #13	UNIT #42	UNIT #49
UNIT #39	UNIT #43	UNIT #65
UNIT #40	UNIT #44	
UNIT #41	UNIT #45	

**V. OPERATOR EQUIPMENT RESPONSIBILITY:**

- A. Equipment operators are responsible for their equipment and shall inspect it prior to beginning plowing operations to insure it is in proper working condition. **All needed repairs are to be reported to the Supervisor.** After plowing operations have ended all equipment will be washed, cabs will be cleaned and repairs completed as required.
- B. **Equipment Fueling:** After snow plowing operations all equipment will be fueled before being parked in the storage area. All Operators will fuel their plowing equipment after completing their shift. **After-hour fueling; sign receipts and hand in.**
- C. **Truck Cabs:** After each shift the operator shall clean out the truck cab & clean windshield and mirrors as needed.

**VI. PLOWING C.B.D.**

- A. The **Central Business District** will be plowed from the curb to the center of the street into a windrow when snow fall is expected to be **(2) two inches or more** the supervisor will instruct plow operators when to plow in this manner.
- B. Listed below are **C.B.D. streets** that will be plowed to the center.

6<sup>th</sup> Ave. - 9<sup>th</sup> ST. to 13<sup>th</sup> ST.  
 7<sup>th</sup> Ave. - 9<sup>th</sup> ST. to 14<sup>th</sup> ST.

- 8<sup>th</sup> Ave. - 12<sup>th</sup> St. to 9<sup>th</sup> ST.
- 10<sup>TH</sup> ST. - 9<sup>th</sup> Ave. to 5<sup>th</sup> Ave.
- 11<sup>th</sup> ST. - 9<sup>th</sup> Ave. to 8<sup>th</sup> Ave. (NORTH)
- 11<sup>th</sup> ST. - 5<sup>th</sup> Ave. to 6<sup>th</sup> Ave. (SOUTH)
- 12<sup>th</sup> ST. - 5<sup>th</sup> Ave. to 8<sup>th</sup> Ave.
- 13<sup>th</sup> ST. - 5<sup>th</sup> Ave. to 8<sup>th</sup> Ave.

**VII. SNOW REMOVAL C.B.D.**

Snow removal will be done as soon after a storm as possible. The north mall on 11<sup>th</sup> Street will be included during this cleanup process also.

A. Snow removal from the parking will begin at 2:00AM and loading of trucks will begin at 3:00AM during nighttime operations.

B. Equipment typically used but not limited to this operation are as follows:

- |         |         |                     |
|---------|---------|---------------------|
| 1. #13  | 11. #50 | 21. #60             |
| 2. #15  | 12. #51 | 22. #61 Snow blower |
| 3. #30  | 13. #52 | 23. #62 Snow blower |
| 4. #31  | 14. #53 | 24. #63             |
| 5. #37  | 15. #54 | 25. #64             |
| 6. #39  | 16. #55 | 26. #65             |
| 7. #40  | 17. #56 | 27. #67             |
| 8. #41  | 18. #57 | 28. #60             |
| 9. #42  | 19. #58 |                     |
| 10. #43 | 20. #59 |                     |

C. Snow will be taken to a dumping area off of the south side of Boyson Road, ground conditions permitting or public service grounds.

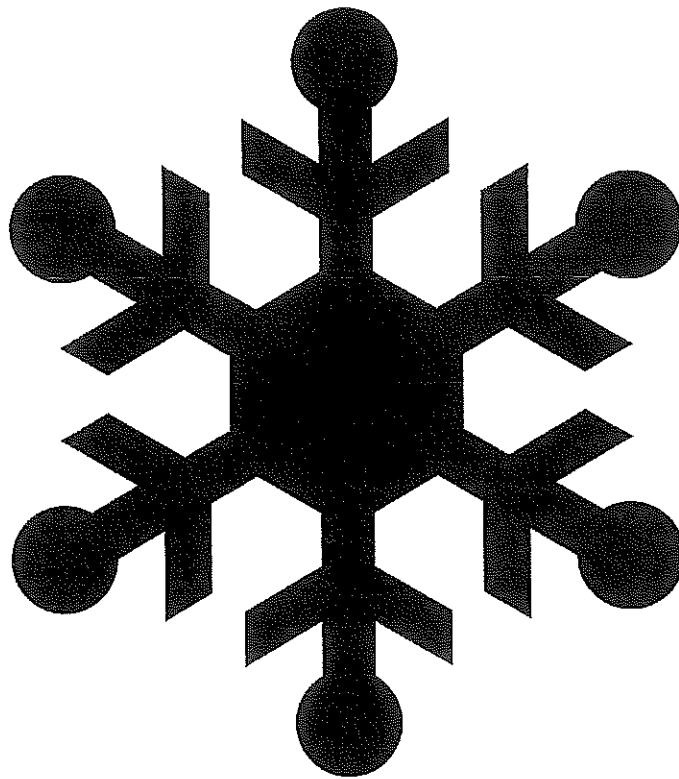
## VIII. SAFETY & OPERATOR CONDUCT:

- A. Equipment Operators shall obey all traffic laws during plowing and sanding operations.
- B. **Do not tow or pull** disabled vehicles out of snow with city equipment, call it into the office to contact PD.
- C. Plows shall operate at a speed of **15 M.P.H. or less.**
- D. **Shifts for plowing** will not exceed **15 hours normally.**
- E. Report damage: to R.O.W. and mail boxes to the supervisor, so they can be recorded and repaired at a later date.
- F. Operate Equipment with factory and emergency lights during sanding and plowing operations.
- G. Report problem areas - to the Supervisor.
- H. Radio Usage - **Be professional** watch what you say, people **are listening.**
- I. **Do not confront the public** - if they have a problem with the way their street was plowed give them the office phone number.

## IX. BREAKS AND LUNCH PERIODS:

- A. When possible the number of operators taking break during a snow removal operation will be limited so that cleanup operations do not become adversely hindered, breaks must be okayed through the supervisor- when possible supervisors will operate the trucks during the break period.
- B. **Plowing equipment shall not remain** on business properties while operators are on extended breaks (lunch/dinner). Small breaks are ok but operators shall turn off all beacons and strobes while parked (includes parked at the shop also).

SANDING ROUTES  
CITY OF MARION PUBLIC SERVICES







**NORTHSIDE SANDING ROUTE  
BLUE ROUTE**

**UNIT No. 51**

<b>TIME</b>	<b>TURN</b>	<b>STREET LOCATION</b>
	<b>START</b>	<b>NORTH ON 35<sup>TH</sup> ST</b>
	<b>L</b>	<b>3rd AVE</b>
	<b>R</b>	<b>31<sup>ST</sup> ST</b>
	<b>L</b>	<b>Abbey Rd</b>
	<b>R</b>	<b>Lennon Ln</b>
	<b>L</b>	<b>Tower Terrace Rd to Winslow Rd</b>
		<b>Turn Around head east circle round about</b>
	<b>R</b>	<b>35<sup>th</sup> St</b>
	<b>L</b>	<b>35<sup>th</sup> Ave turn around at HWY 13</b>
	<b>R</b>	<b>35<sup>th</sup> St</b>
	<b>L</b>	<b>Tower Terrace Rd</b>
	<b>L</b>	<b>Lennon Ln</b>
	<b>L</b>	<b>Abbey Rd</b>
	<b>R</b>	<b>31<sup>st</sup> St</b>
	<b>R</b>	<b>29<sup>th</sup> Ave</b>
	<b>L</b>	<b>24<sup>th</sup> St</b>
	<b>R</b>	<b>10<sup>th</sup> Ave</b>
	<b>L</b>	<b>22<sup>nd</sup> St</b>
	<b>R</b>	<b>7<sup>th</sup> Ave / Marion Blvd</b>
	<b>R</b>	<b>14<sup>th</sup> St</b>
	<b>R</b>	<b>11<sup>th</sup> Ave</b>
	<b>R</b>	<b>17<sup>th</sup> St</b>
	<b>R</b>	<b>10<sup>th</sup> Ave</b>
	<b>R</b>	<b>14<sup>th</sup> St</b>
	<b>L</b>	<b>McGowan Blvd</b>
	<b>L</b>	<b>10<sup>th</sup> St</b>
	<b>L</b>	<b>Brockman Ave</b>
	<b>L</b>	<b>24<sup>th</sup> St</b>
	<b>R</b>	<b>28<sup>th</sup> Ave</b>
	<b>R</b>	<b>27<sup>th</sup> St to 8<sup>th</sup> Ave</b>
		<b>End of Route</b>

**NORTHSIDE SANDING ROUTE  
YELLOW ROUTE**

UNIT No.   #55  

<b>TIME</b>	<b>TURN</b>	<b>STREET LOCATION</b>
	<b>START</b>	<b>North on 35<sup>th</sup> St</b>
	<b>L</b>	<b>7<sup>th</sup> Ave</b>
	<b>R</b>	<b>Linden Dr</b>
	<b>R</b>	<b>Sunburst Ave</b>
	<b>R</b>	<b>35<sup>th</sup> St</b>
	<b>R</b>	<b>10<sup>th</sup> Ave</b>
		<b>Circle round about &amp; 10<sup>th</sup> St continue south</b>
	<b>L</b>	<b>5<sup>th</sup> Ave</b>
	<b>L</b>	<b>11<sup>th</sup> St</b>
	<b>L</b>	<b>6<sup>th</sup> Ave</b>
	<b>R</b>	<b>10<sup>th</sup> St</b>
	<b>R</b>	<b>Hunters Greenway</b>
	<b>R</b>	<b>Hunters Field Ln</b>
	<b>R</b>	<b>Winslow Rd</b>
	<b>R</b>	<b>Connection Ave</b>
	<b>R</b>	<b>10<sup>th</sup> St</b>
	<b>R</b>	<b>Shamrock Woods</b>
	<b>L</b>	<b>10<sup>th</sup> St</b>
	<b>R</b>	<b>Boyson Rd</b>
	<b>R</b>	<b>Alburnett Rd</b>
	<b>L</b>	<b>Edinburgh Ave</b>
	<b>L</b>	<b>Victoria St turn around @ Newcastle head north</b>
	<b>R</b>	<b>Edinburgh Ave</b>
	<b>L</b>	<b>Alburnett Rd</b>
	<b>R</b>	<b>W 33<sup>rd</sup> Ave</b>
	<b>L</b>	<b>3<sup>rd</sup> St</b>
	<b>R</b>	<b>Tower Terrace Rd turn around east end head west</b>
	<b>L</b>	<b>10<sup>th</sup> St</b>
		<b>End of Route</b>

**NORTH SIDE SANDING ROUTE  
PURPLE ROUTE**

**UNIT No. #57**

<b>TIME</b>	<b>TURN</b>	<b>STREET LOCATION</b>
	<b>START</b>	<b>35<sup>TH</sup> St</b>
	<b>L</b>	<b>3<sup>rd</sup> Ave</b>
	<b>R</b>	<b>31<sup>ST</sup> St</b>
	<b>L</b>	<b>8<sup>TH</sup> Ave</b>
	<b>L</b>	<b>Lindale Dr</b>
	<b>R</b>	<b>Blairsferry Rd – <i>INSIDE LANES</i> to city limits, turn around and head East</b>
	<b>R</b>	<b>Lindale Dr turn around @ dead end head north</b>
	<b>L</b>	<b>Parkview Dr</b>
	<b>L</b>	<b>Elm St</b>
	<b>R</b>	<b>West 14<sup>TH</sup> St</b>
	<b>L</b>	<b>Alpine Rd</b>
	<b>R</b>	<b>Linnview Dr</b>
	<b>L</b>	<b>W 8<sup>th</sup> Ave</b>
	<b>L</b>	<b>Lindale</b>
	<b>R</b>	<b>Parkview Dr</b>
	<b>L</b>	<b>West 8<sup>TH</sup> Ave</b>
	<b>L</b>	<b>10<sup>th</sup> St</b>
	<b>L</b>	<b>Central Ave</b>
	<b>L</b>	<b>Boyson Rd – turn around @ city limits, head east</b>
	<b>L</b>	<b>New Castle Rd to East Robins Rd</b>
		<b>End of Route</b>

**NORTHSIDE SANDING ROUTE  
BLACK ROUTE**

Unit No.: 58

<b>Time</b>	<b>Turn</b>	<b>Street Location</b>
	<b>Start</b>	<b>North on 35<sup>th</sup> St</b>
	<b>R</b>	<b>3<sup>rd</sup> Ave</b>
	<b>L</b>	<b>44<sup>th</sup> St</b>
	<b>R</b>	<b>8<sup>th</sup> Ave</b>
	<b>L</b>	<b>50<sup>th</sup> St</b>
	<b>R</b>	<b>Prairie Ridge Ave cross Hwy 13, turn around @ Bluegrass St &amp; head west</b>
	<b>L</b>	<b>50<sup>th</sup> St</b>
	<b>L</b>	<b>Kacena, cross Hwy 13</b>
	<b>L</b>	<b>Cope St</b>
	<b>L</b>	<b>Scott St</b>
	<b>R</b>	<b>Kacena Ave</b>
	<b>L</b>	<b>50<sup>th</sup> St</b>
	<b>R</b>	<b>8<sup>th</sup> Ave</b>
	<b>R</b>	<b>44<sup>th</sup> St, turn around @ north end, head south</b>
	<b>L</b>	<b>29<sup>th</sup> Ave, turn around @ Hwy 13 then head west</b>
	<b>L</b>	<b>35<sup>th</sup> St</b>
	<b>L</b>	<b>Windermere Way</b>
	<b>R</b>	<b>44<sup>th</sup> St</b>
	<b>R</b>	<b>McGowan Blvd</b>
	<b>L</b>	<b>35<sup>th</sup> St</b>
	<b>L</b>	<b>Willowwood Ave</b>
	<b>L</b>	<b>41<sup>st</sup> St</b>
	<b>L</b>	<b>McGowan Blvd</b>
	<b>R</b>	<b>Winchester</b>
	<b>L</b>	<b>29<sup>th</sup> Ave – circle round about head east</b>
		<b>29<sup>th</sup> Ave to 44<sup>th</sup> St end of route</b>





**SOUTHSIDE SANDING ROUTE  
GREEN ROUTE**

**UNIT No. #52**

<b>TIME</b>	<b>TURN</b>	<b>STREET LOCATION</b>
	<b>START</b>	<b>35<sup>TH</sup> St North</b>
	<b>R</b>	<b>3<sup>rd</sup> Ave</b>
	<b>R</b>	<b>44<sup>th</sup> St to Hwy 100</b>
	<b>R</b>	<b>Hwy 100 no material</b>
	<b>R</b>	<b>Munier Rd – 1<sup>st</sup> Ave</b>
	<b>L</b>	<b>S 11<sup>th</sup> St</b>
	<b>L</b>	<b>A Ave</b>
	<b>R</b>	<b>S 14<sup>th</sup> St</b>
	<b>R</b>	<b>F Ave</b>
	<b>L</b>	<b>S 11<sup>th</sup> St do inside turn lanes</b>
	<b>R</b>	<b>30<sup>th</sup> St Dr turn around head north</b>
	<b>R</b>	<b>A Ave</b>
	<b>R</b>	<b>Pennington Dr</b>
	<b>R</b>	<b>Raleigh Ln</b>
	<b>R</b>	<b>Alexis Ln</b>
	<b>R</b>	<b>Bullis Dr</b>
	<b>L</b>	<b>Meadow Ridge Dr</b>
	<b>L</b>	<b>Hillview Dr / S 26<sup>th</sup> St</b>
	<b>R</b>	<b>Pleasantview Dr</b>
	<b>R</b>	<b>S 15<sup>th</sup> St</b>
	<b>L</b>	<b>Meadowview Dr</b>
		<b>East Post Rd</b>
		<b>End of Route</b>



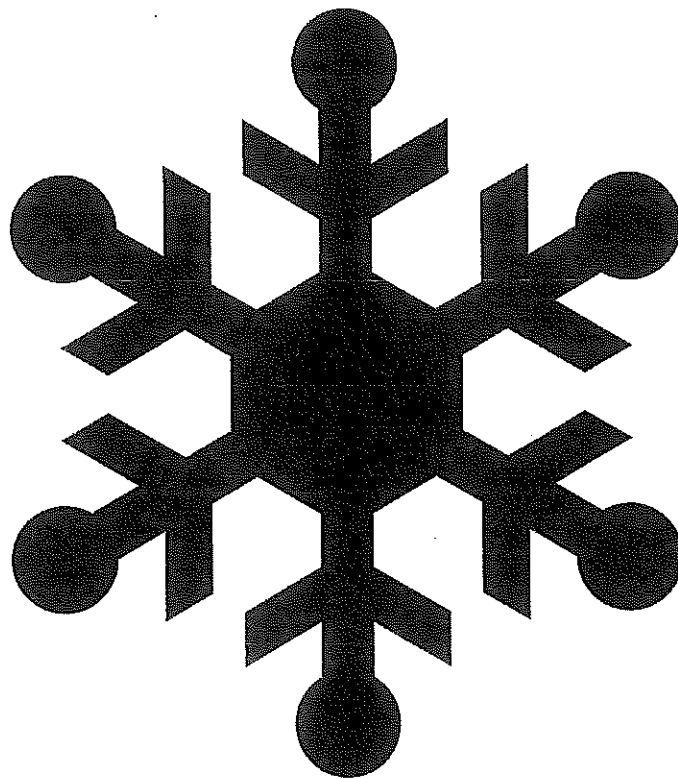
**SOUTHSIDE SANDING ROUTE  
ORANGE ROUTE**

**UNIT No. # 53**

<b>TIME</b>	<b>START</b>	<b>STREET LOCATION</b>
		Head South on 35 <sup>TH</sup> STREET
	R	Munier Rd
	L	31 <sup>st</sup> St turn around @ 1 <sup>st</sup> driveway south of Hwy 100 east side head north
	L	Grand Ave
	L	Elim Dr
	L	Valley Park St
	L	Grand Ave , turn around @west end then head east
	L	31 <sup>st</sup> St
	L	3 <sup>rd</sup> Ave
	R	1 <sup>st</sup> St
	R	6 <sup>th</sup> Ave
	L	9 <sup>th</sup> St
	R	7 <sup>th</sup> Ave
	R	10 <sup>th</sup> St
	R	6 <sup>th</sup> Ave to round about continue north on 7 <sup>th</sup> St
	L	8 <sup>th</sup> Ave
	R	6 <sup>th</sup> St
	R	9 <sup>th</sup> Ave
	R	7 <sup>th</sup> St to round about continue east on 6 <sup>th</sup> Ave
	L	13 <sup>th</sup> St
	L	8 <sup>th</sup> Ave
	L	12 <sup>th</sup> St
	L	3 <sup>rd</sup> Ave
	L	14 <sup>th</sup> St
	L	4 <sup>th</sup> Ave (now one way west bound)
	L	13 <sup>th</sup> St
	L	3 <sup>rd</sup> Ave
	L	14 <sup>th</sup> St
	L	5th Ave
	R	13 <sup>th</sup> St. to 6 <sup>th</sup> Ave – end of route



SECONDARY SANDING ROUTES  
CITY OF MARION PUBLIC SERVICE

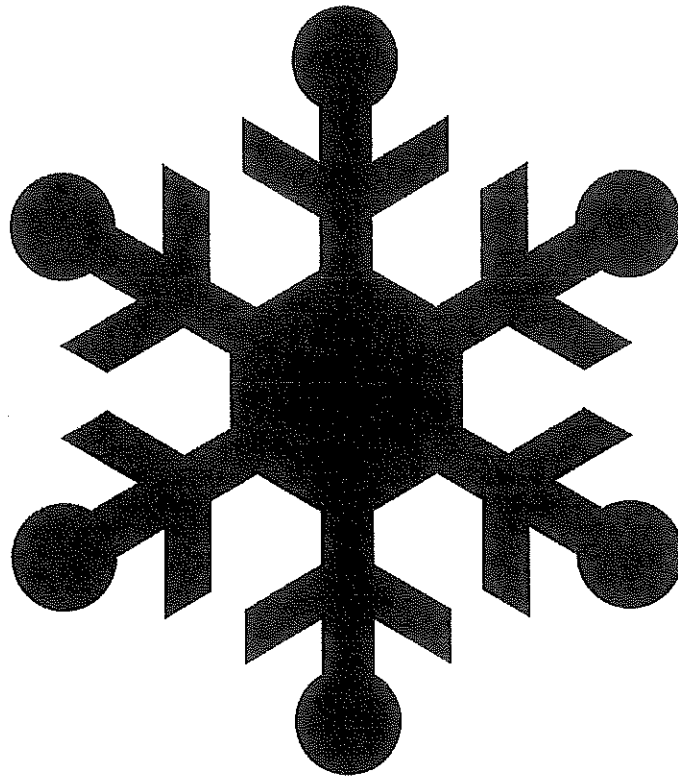


**SECONDARY SANDING & PLOWING LOCATIONS 23-24**

<b><u>COMMERCIAL</u></b>	<b>CLEARED</b>	
C. B. D. Area – 6 <sup>TH</sup> Ave to 10 <sup>TH</sup> Ave & from 9 <sup>TH</sup> St to 14 <sup>TH</sup> St		
Menard Ln & Oak Ln		
Lyons Ln		
Katz Dr & Fire #2		
Industrial Dr & 4 <sup>TH</sup> Ave east of 35 <sup>TH</sup> St		
Commercial & Industrial area – off 44 <sup>TH</sup> St & 50 <sup>TH</sup> St		
Wal-Mart frontage road		
Commercial area east of Hwy 13 – Including Beall Ct (Kwik Star)		
Cardinal & Linden Dr (Fareway)		
Chandler Ct (off 50 <sup>th</sup> St)		
REC Dr (Hwy 13 access)		
Marion Airport Rd Hwy 151 to east entrance of the airport		
<b><u>RESIDENTIAL</u></b>		
16 <sup>TH</sup> & 18 <sup>TH</sup> St. from 3 <sup>RD</sup> to 5 <sup>TH</sup> Ave		
20 <sup>th</sup> St. from 3 <sup>rd</sup> Ave to 5 <sup>th</sup> Ave		
3 <sup>RD</sup> & 4 <sup>TH</sup> St from 3 <sup>RD</sup> to 6 <sup>TH</sup> Ave		
19 <sup>TH</sup> St 5 <sup>TH</sup> to 7 <sup>TH</sup> Ave		
1 <sup>st</sup> Ave – 8 <sup>th</sup> St. to 11 <sup>th</sup> St.		
S 5 <sup>th</sup> St – S. 6 <sup>th</sup> St. loop		
S 12 <sup>th</sup> St – A Ave. to Grand		
Pepperwood Area		
Keyes Ct./Ridge Dr./Southview		
Linnwood Knolls Area		
Tama St (off Hwy100)		
Armar Dr (off Hwy 100 to city limits)/ Cemar Ct		
2 <sup>ND</sup> , 3 <sup>RD</sup> , 6 <sup>TH</sup> , 7 <sup>TH</sup> , 8 <sup>TH</sup> St. – From 7 <sup>TH</sup> TO 8 <sup>TH</sup> Ave		
FIRST 100' OF 3 <sup>rd</sup> , 4 <sup>TH</sup> , 5 <sup>TH</sup> , 6 <sup>TH</sup> , 7 <sup>TH</sup> St. North of 29 <sup>TH</sup> Ave		
Irish Dr- Irish Ct to Lowe Park entrance including crossover on Tower Terrace Rd		
Partridge – Larick Dr to Alburnett Rd		
Larick Dr from Partridge to Alburnett Rd		
7 <sup>TH</sup> 8 <sup>TH</sup> 9 <sup>TH</sup> St. North of Central		
17 <sup>TH</sup> & 18 <sup>TH</sup> St. North OF 10 <sup>TH</sup> Ave		
Edgebrook Dr. 29 <sup>th</sup> Ave to Pebble Creek Dr		
26 <sup>th</sup> St from McGowan to 24 <sup>th</sup> Ave		

24 <sup>th</sup> Ave – 26 <sup>th</sup> St. to 31 <sup>st</sup> St		
50 <sup>th</sup> St – 29 <sup>th</sup> Ave to Prairie Ridge Ave		
Learning Lane – 35 <sup>th</sup> Ave to north end		

SNOW ROUTES  
CITY OF MARION PUBLIC SERVICES



## #41 Rubber Blade

6<sup>th</sup> Ave from 7<sup>th</sup> & 7<sup>th</sup> round about to 6<sup>th</sup> Ave & 15<sup>th</sup> St round about

10<sup>th</sup> St from 6<sup>th</sup> Ave to 5<sup>th</sup> Ave

7<sup>th</sup> Ave & 27<sup>th</sup> St round about south left (StarBucks)

Linden Dr from 10<sup>th</sup> Ave to 7<sup>th</sup> Ave (south bound only)

Katz Dr

Fire 2

Police Department

Fire 1





**NORTH SIDE SNOW ROUTE  
BLUE PLOWING ROUTE**

**UNIT No. 51**

<b>TIME</b>	<b>TURN</b>	<b>STREET LOCATION</b>
	<b>START</b>	<b>SHOP</b>
	L	3 <sup>rd</sup> Ave
	R	31 <sup>st</sup> St
	L	Abbey Rd
	R	Lennon Ln
	L	Tower Terrace Rd turn around @ Winslow Rd head east to round about
	R	35 <sup>th</sup> St
	L	35 <sup>th</sup> Ave to HWY 13 turn around head west
	R	35 <sup>th</sup> St
	L	Tower Terrace
		2 <sup>nd</sup> Pass from Winslow Rd to Round About
	L	Lennon Ln
	L	Abbey Rd
	R	31 <sup>st</sup> St
	R	8 <sup>th</sup> Ave
	R	27 <sup>th</sup> St
	L	28 <sup>th</sup> Ave
	R	24 <sup>th</sup> St cross to Somerbrook Lane
	R	29 <sup>th</sup> Ave
	L	24 <sup>th</sup> St
	R	10 <sup>th</sup> Ave
	L	22 <sup>nd</sup> St
	R	7 <sup>th</sup> Ave
	R	14 <sup>th</sup> St
	R	10 <sup>th</sup> Ave
	L	17 <sup>th</sup> St
	L	11 <sup>th</sup> Ave
	L	14 <sup>th</sup> St
	L	7 <sup>th</sup> Ave
	L	22 <sup>nd</sup> St
	R	10 <sup>th</sup> Ave
	L	24 <sup>th</sup> St
	L	Brockman Ave
	R	10 <sup>th</sup> St
	R	Tower Terrace Rd turn around east end head west
	L	Turn around at Stonefield Dr head east clean crossover
	R	10 <sup>th</sup> St
	R	Boyson Rd
	L	Bowstring Dr turn around
	R	Boyson Rd
	R	10 <sup>th</sup> St
	L	McGowan Blvd
	R	14 <sup>th</sup> St
	L	11 <sup>th</sup> Ave
	R	17 <sup>th</sup> St

	<b>R</b>	<b>10<sup>th</sup> Ave</b>
	<b>R</b>	<b>14<sup>th</sup> St</b>
	<b>L</b>	<b>McGowan Blvd</b>
	<b>L</b>	<b>10<sup>th</sup> St</b>
	<b>L</b>	<b>Brockman Ave</b>
	<b>L</b>	<b>24<sup>th</sup> St</b>
	<b>R</b>	<b>28<sup>th</sup> Ave</b>
	<b>R</b>	<b>27<sup>th</sup> St</b>
	<b>L</b>	<b>8<sup>th</sup> Ave</b>
	<b>R</b>	<b>31<sup>st</sup> St</b>
	<b>L</b>	<b>3<sup>rd</sup> Ave</b>
	<b>R</b>	<b>35<sup>th</sup> St</b>
		<b>End of Route.</b>

**NORTH SIDE SNOW ROUTE  
YELLOW PLOWING ROUTE**

**UNIT No.: #55**

<b>TIME</b>	<b>TURN</b>	<b>STREET LOCATION</b>
	<b>START</b>	<b>North on 35<sup>th</sup> St</b>
	<b>L</b>	<b>7<sup>th</sup> Ave</b>
	<b>R</b>	<b>Linden Dr</b>
	<b>R</b>	<b>Sunburst Ave</b>
	<b>R</b>	<b>35<sup>th</sup> St</b>
	<b>R</b>	<b>10<sup>th</sup> Ave</b>
		<b>Circle round about continue south</b>
		<b>(Pick up Plow at 6<sup>th</sup> Ave)</b>
	<b>L</b>	<b>5<sup>th</sup> Ave (PLOW DOWN)</b>
	<b>L</b>	<b>11<sup>th</sup> St</b>
	<b>L</b>	<b>6<sup>th</sup> Ave (PLOW UP)</b>
	<b>R</b>	<b>10<sup>th</sup> St (PLOW DOWN)</b>
	<b>R</b>	<b>Hunters Green Way</b>
	<b>R</b>	<b>Hunters Field Ln</b>
	<b>R</b>	<b>Winslow Rd</b>
	<b>R</b>	<b>Connection Ave</b>
	<b>R</b>	<b>10<sup>th</sup> St</b>
	<b>R</b>	<b>Shamrock Woods</b>
	<b>L</b>	<b>10<sup>th</sup> St</b>
	<b>L</b>	<b>Connection Ave</b>
		<b>Make second pass on Connection Ave if needed</b>
	<b>L</b>	<b>Winslow Rd</b>
	<b>L</b>	<b>Hunters Field Ln</b>
	<b>L</b>	<b>10<sup>th</sup> St</b>
	<b>R</b>	<b>Boyson Rd</b>
	<b>R</b>	<b>Alburnett Rd</b>
	<b>R</b>	<b>33<sup>rd</sup> Ave</b>
	<b>L</b>	<b>3<sup>rd</sup> St</b>
	<b>L</b>	<b>Tower Terrace Rd outside half of road</b>
		<b>Turn around at Round – About head east turn around @ east end of Tower Terrace Rd head west</b>
	<b>L</b>	<b>3<sup>rd</sup> St</b>
	<b>R</b>	<b>33<sup>rd</sup> Ave</b>
	<b>L</b>	<b>Alburnett Rd</b>
	<b>R</b>	<b>Edinburgh Ave</b>
	<b>L</b>	<b>Victoria St turn around @ Newcastle Rd</b>
	<b>R</b>	<b>Edinburgh Ave</b>
	<b>R</b>	<b>Alburnett Rd</b>
	<b>L</b>	<b>Boyson Rd</b>
	<b>R</b>	<b>10<sup>th</sup> St</b>



**NORTH SIDE SNOW ROUTE  
PURPLE PLOWING ROUTE**

**UNIT No: #57**

<b>TIME</b>	<b>TURN</b>	<b>STREET LOCATION</b>
	<b>START</b>	<b>35<sup>TH</sup> St</b>
	<b>L</b>	<b>3<sup>rd</sup> Ave</b>
	<b>R</b>	<b>31<sup>st</sup> St</b>
	<b>L</b>	<b>8<sup>th</sup> Ave</b>
	<b>L</b>	<b>Lindale Dr turn around @ dead end head north</b>
		<b>Turn around @ ( Lindale &amp; 8<sup>th</sup> Ave) head south</b>
	<b>L</b>	<b>Blairs Ferry Rd, turn around @ city limits</b>
		<b>Blairs Ferry Rd turn around @ Thomas Park make second pass to city limits back to Thomas Park</b>
	<b>R</b>	<b>Lindale Dr</b>
	<b>L</b>	<b>W 8<sup>TH</sup> ST</b>
	<b>R</b>	<b>Linnview Dr</b>
	<b>L</b>	<b>Alpine Dr</b>
	<b>R</b>	<b>W 14<sup>TH</sup> ST</b>
	<b>L</b>	<b>Elm St</b>
	<b>R</b>	<b>Parkview Dr</b>
	<b>R</b>	<b>Lindale Dr</b>
	<b>L</b>	<b>8<sup>TH</sup> Ave</b>
	<b>L</b>	<b>Parkview Dr</b>
	<b>L</b>	<b>Elm St</b>
	<b>R</b>	<b>W 14<sup>TH</sup> St</b>
	<b>L</b>	<b>Alpine Dr</b>
	<b>R</b>	<b>Linnview Dr</b>
	<b>L</b>	<b>W 8<sup>TH</sup> Ave</b>
	<b>L</b>	<b>Lindale Dr</b>
	<b>R</b>	<b>Parkview Dr</b>
	<b>L</b>	<b>8<sup>TH</sup> Ave</b>
	<b>L</b>	<b>10<sup>TH</sup> St</b>
	<b>L</b>	<b>Central /Alburnett Rd</b>
	<b>L</b>	<b>Boyson Rd, turn around @ city limits</b>
	<b>L</b>	<b>Newcastle Rd turn around @ Bedford Ct head south</b>
	<b>L</b>	<b>Boyson Rd</b>
	<b>R</b>	<b>Alburnett Rd / Central Ave</b>
	<b>R</b>	<b>10<sup>th</sup> St</b>
	<b>L</b>	<b>8<sup>th</sup> Ave</b>
	<b>R</b>	<b>31<sup>st</sup> St</b>
	<b>L</b>	<b>3<sup>rd</sup> Ave</b>
	<b>R</b>	<b>35<sup>th</sup> St to shop</b>

**NORTHSIDE PLOWING ROUTE  
BLACK ROUTE**

Unit No.: 58

TIME	TURN	STREET LOCATION
	START	35 <sup>th</sup> St shop head north
	R	3rd Ave
	L	44 <sup>th</sup> St
	R	8 <sup>th</sup> Ave
	L	50 <sup>th</sup> St
	R	Prairie Ridge Ave, cross Hwy 13, turn around @ Bluegrass St
	L	50 <sup>th</sup> St
	L	Kacena, cross Hwy 13
	L	Cope Dr
	L	Scott St
	R	Kacena Ave
	L	50 <sup>th</sup> St
	R	8 <sup>th</sup> Ave
	R	44 <sup>th</sup> St to north end and turn around
	L	29 <sup>th</sup> Ave turn around @ Hwy 13, head west inside lanes 44 <sup>th</sup> St to 35 <sup>th</sup> St circle round about continue South on 35 <sup>th</sup> St
	L	Windermere Way
	R	44 <sup>th</sup> St
	R	McGowan Blvd
	L	35 <sup>th</sup> St
	L	Willowwood
	L	41 <sup>st</sup> St
	L	McGowan Blvd
	R	Winchester Dr
	L	29 <sup>th</sup> Ave outside lanes
	R	35 <sup>th</sup> St turn around at Tower Terrace round about head south
	L	29 <sup>th</sup> Ave inside lanes to 44 <sup>th</sup> St turn around head west circle round about continue east
	R	Winchester Dr
	L	McGowan Blvd
	R	41 <sup>st</sup> St
	R	Willowwood
	R	35 <sup>th</sup> St.
	R	McGowan Blvd
	L	44 <sup>th</sup> St
	L	Windermere Way
	R	35 <sup>th</sup> St
	R	29 <sup>th</sup> Ave outside lanes
	R	44 <sup>th</sup> St
	R	3 <sup>rd</sup> Ave
	L	35 <sup>th</sup> St to shop.

**North Side Plowing Route  
Brown Plowing Route**

Unit No. 59

<b>TIME</b>	<b>TURN</b>	<b>STREET LOCATION</b>
	<b>Start</b>	<b>North on 35<sup>th</sup> St (inside lanes)</b>
	<b>L</b>	<b>29<sup>th</sup> Ave</b>
	<b>L</b>	<b>Indian Creek Rd</b>
	<b>L</b>	<b>25<sup>th</sup> Ave</b>
	<b>R</b>	<b>35<sup>th</sup> St</b>
	<b>R</b>	<b>McGowan Blvd</b>
	<b>R</b>	<b>10<sup>th</sup> St</b>
	<b>R</b>	<b>Indian Creek Rd</b>
	<b>L</b>	<b>Winslow Rd</b>
	<b>L</b>	<b>New Winslow Rd turn around @ Tower Terrace head north</b>
	<b>R</b>	<b>Hunters Ridge Rd</b>
	<b>R</b>	<b>Lucore Rd circle round-about at Tower Terrace Rd head north</b>
		<b>Lucore Rd turn around @ Royal Oak Ridge Dr head south</b>
	<b>R</b>	<b>Hunters Ridge Rd</b>
	<b>R</b>	<b>Winslow Rd turn around @ Glen Rock Dr head south</b>
	<b>L</b>	<b>Old Winslow Rd</b>
	<b>R</b>	<b>Indian Creek Rd</b>
	<b>L</b>	<b>10<sup>th</sup> St</b>
	<b>L</b>	<b>McGowan Blvd</b>
	<b>L</b>	<b>35<sup>th</sup> St</b>
	<b>L</b>	<b>25<sup>th</sup> Ave</b>
	<b>R</b>	<b>Indian Creek Rd</b>
	<b>R</b>	<b>29<sup>th</sup> Ave</b>
	<b>R</b>	<b>35<sup>th</sup> St to shop inside lanes</b>
		<b>End of route.</b>





**SOUTHSIDE SNOW ROUTE  
GREEN PLOWING ROUTE**

**UNIT No. 52**

<b>TIME</b>	<b>TURN</b>	<b>STREET LOCATION</b>
	<b>NORTH</b>	<b>35<sup>th</sup> St</b>
	<b>R</b>	<b>3<sup>rd</sup> Ave</b>
	<b>R</b>	<b>44<sup>th</sup> St</b>
	<b>R</b>	<b>Hwy 100 plow up / no material</b>
	<b>R</b>	<b>Munier Rd / 1<sup>st</sup> Ave</b>
	<b>L</b>	<b>11<sup>th</sup> Street</b>
	<b>L</b>	<b>A Ave</b>
	<b>R</b>	<b>14<sup>th</sup> St</b>
	<b>R</b>	<b>F Ave</b>
	<b>L</b>	<b>S11<sup>th</sup> St./East Post Rd. Turn around @ 30<sup>th</sup> St Dr head north</b>
	<b>L</b>	<b>Turn around @ Oakbrook Dr head south</b>
	<b>R</b>	<b>30<sup>th</sup> St Dr turn around head north</b>
	<b>R</b>	<b>F Ave</b>
	<b>L</b>	<b>14<sup>th</sup> St</b>
	<b>R</b>	<b>A Ave</b>
	<b>R</b>	<b>Pennington Dr</b>
	<b>R</b>	<b>Raleigh Lane</b>
	<b>R</b>	<b>Alexis Lane</b>
	<b>R</b>	<b>Bullis Dr</b>
	<b>L</b>	<b>Meadow Ridge Blvd</b>
	<b>L</b>	<b>Hillview / S26<sup>th</sup> St</b>
	<b>R</b>	<b>Pleasantview Dr</b>
	<b>R</b>	<b>S 15<sup>th</sup></b>
	<b>L</b>	<b>Meadowview turn around @ S11<sup>th</sup> head east</b>
	<b>R</b>	<b>S 15<sup>th</sup> St</b>
	<b>L</b>	<b>Pleasantview Dr</b>
	<b>L</b>	<b>S26<sup>th</sup> St./ Hillview Dr</b>
	<b>R</b>	<b>Meadow Ridge Blvd</b>
	<b>R</b>	<b>Bullis Dr</b>
	<b>L</b>	<b>Alexis Ln</b>
	<b>L</b>	<b>Raleigh Ln</b>
	<b>L</b>	<b>Pennington Dr</b>
	<b>L</b>	<b>A Ave</b>
	<b>R</b>	<b>S 11<sup>th</sup> St</b>
	<b>R</b>	<b>1<sup>st</sup> Ave / Munier Rd</b>
	<b>L</b>	<b>Hwy 100 plow up / no material</b>
	<b>L</b>	<b>44<sup>th</sup> St</b>
	<b>L</b>	<b>3<sup>rd</sup> Ave</b>
	<b>L</b>	<b>35<sup>th</sup> St to shop.</b>
		<b>End of Route</b>

**SOUTHSIDE SNOW ROUTE  
ORANGE PLOWING ROUTE**

**UNIT No. # 53**

<b>TIME</b>	<b>TURN</b>	<b>STREET LOCATION</b>
	<b>START</b>	<b>35<sup>th</sup> St South</b>
	<b>R</b>	<b>Munier Rd</b>
	<b>L</b>	<b>31<sup>st</sup> St turn around 1<sup>st</sup> driveway south of Hwy 100 east side of road head north</b>
	<b>L</b>	<b>Grand Ave</b>
	<b>L</b>	<b>S11th St turn around @ 30<sup>th</sup> St Dr head north</b>
	<b>L</b>	<b>Grand Ave</b>
	<b>L</b>	<b>Elim Dr</b>
	<b>L</b>	<b>Valley Park St</b>
	<b>L</b>	<b>Grand Ave turn around west and head east</b>
	<b>R</b>	<b>Valley Park St</b>
	<b>R</b>	<b>Elim Dr</b>
	<b>R</b>	<b>Grand Ave</b>
	<b>L</b>	<b>31<sup>st</sup> St</b>
	<b>L</b>	<b>3<sup>rd</sup> Ave</b>
	<b>R</b>	<b>1<sup>st</sup> St</b>
	<b>R</b>	<b>6<sup>th</sup> Ave</b>
	<b>L</b>	<b>9<sup>th</sup> St</b>
	<b>R</b>	<b>7<sup>th</sup> Ave</b>
	<b>R</b>	<b>10<sup>th</sup> St</b>
	<b>R</b>	<b>6<sup>th</sup> Ave to round about continue north on 7<sup>th</sup> St PICK UP PLOW ON 6<sup>th</sup> AVE FROM 10<sup>TH</sup> St to 9<sup>th</sup> St</b>
	<b>L</b>	<b>8<sup>th</sup> Ave</b>
	<b>R</b>	<b>6<sup>th</sup> St</b>
	<b>R</b>	<b>9<sup>th</sup> Ave</b>
	<b>R</b>	<b>7<sup>th</sup> St to round about continue east on 6<sup>th</sup> Ave PICK UP PLOW 9<sup>TH</sup> St to 12<sup>th</sup> St</b>
	<b>L</b>	<b>13<sup>th</sup> St</b>
	<b>L</b>	<b>8<sup>th</sup> Ave</b>
	<b>L</b>	<b>12<sup>th</sup> St</b>
	<b>L</b>	<b>3<sup>rd</sup> Ave</b>
	<b>L</b>	<b>14<sup>th</sup> St</b>
	<b>L</b>	<b>4<sup>th</sup> Ave (Begin ONE-WAY West Bound) plow snow to South</b>
	<b>L</b>	<b>13<sup>th</sup> St plow snow to west</b>
	<b>L</b>	<b>3<sup>rd</sup> Ave</b>
	<b>L</b>	<b>14<sup>th</sup> St</b>
	<b>L</b>	<b>4<sup>th</sup> Ave (2<sup>nd</sup> pass)</b>
	<b>L</b>	<b>13<sup>th</sup> St (2<sup>nd</sup> pass)</b>
	<b>L</b>	<b>3<sup>rd</sup> Ave</b>
	<b>L</b>	<b>14<sup>th</sup> St</b>
	<b>L</b>	<b>5<sup>th</sup> Ave</b>
	<b>R</b>	<b>13<sup>th</sup> St</b>
	<b>L</b>	<b>6<sup>th</sup> Ave</b>
	<b>R</b>	<b>12<sup>th</sup> St</b>
	<b>R</b>	<b>8<sup>th</sup> Ave</b>



**SOUTH SIDE SNOW ROUTE  
PINK ROUTE**

**UNIT: #56**

<b>TIME</b>	<b>TURN</b>	<b>STREET LOCATION</b>
	<b>START</b>	<b>SHOP</b>
	L	35 <sup>th</sup> St
	R	MUNIER
	R	31 <sup>st</sup> St
	L	5 <sup>th</sup> Ave
	R	22 <sup>nd</sup> St
	L	6 <sup>th</sup> Ave
		Circle round about @ 15 <sup>th</sup> St head east
		Circle round about @ 7 <sup>th</sup> Ave head west
		make second pass
	R	22 <sup>nd</sup> St
	R	5 <sup>th</sup> Ave
	R	10 <sup>th</sup> St
	R	6 <sup>th</sup> Ave (PICK UP BLADE)
	R	S 11 <sup>th</sup> St /EAST POST Rd (DROP BLADE)
		Turn around @ 30 <sup>th</sup> St Dr. and head north
		Turn around @Oakbrook Dr head south
		Turn around @ 30 <sup>th</sup> St head north
	L	5 <sup>th</sup> Ave
	R	1 <sup>st</sup> St
	L	Marion Blvd
	L	Tama St turn around @ Bridget Ln
	R	Marion Blvd
	L	Twix Town Rd
	L	Collins access turn around @ mall make 2 <sup>nd</sup> pass is needed
	R	Twix Town Rd
	L	Marion Blvd
	R	1 <sup>st</sup> St
	L	5 <sup>th</sup> Ave
	L	11 <sup>th</sup> St
	L	6 <sup>th</sup> Ave (PICK UP BLADE)
	R	10 <sup>th</sup> St
	R	7 <sup>th</sup> Ave
	R	15 <sup>th</sup> St turn around@ S 15 <sup>th</sup> St cul-de-sac head north
	L	7 <sup>th</sup> Ave

	L	10 <sup>th</sup> St
	L	5 <sup>th</sup> Ave
	R	22 <sup>nd</sup> St, turn around @ city limits, head north
	R	5 <sup>th</sup> Ave
	R	31 <sup>st</sup> St
	L	Munier
	L	35 <sup>th</sup> St to shop
		End of Route

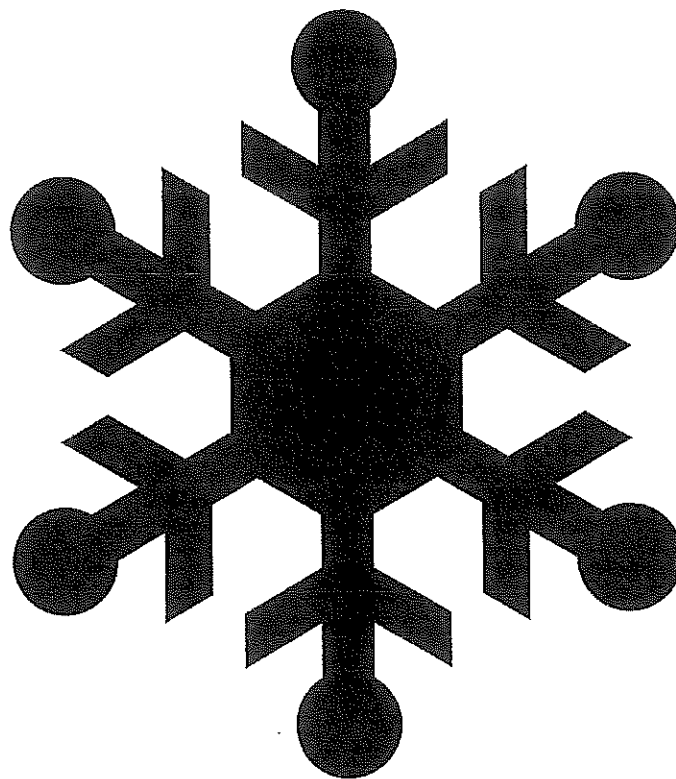
## SNOW ROUTE PRIORITY INTERSECTIONS

NORTH SIDE LOCATION	CLEARED
31 <sup>ST</sup> ST. & 7 <sup>TH</sup> AVE.	
31 <sup>ST</sup> ST & 8 <sup>TH</sup> AVE.	
35 <sup>TH</sup> ST & 7 <sup>TH</sup> AVE.	
HWY. 151 & HY-VEE	
HWY. 151 & KATZ DRIVE	
HWY. 151 & 44 <sup>TH</sup> ST.	
HWY. 151 & 50 <sup>TH</sup> ST.	
HWY. 151 & EAGLEVIEW DR.	
HWY. 151 & HWY. 13 - TURN LANES	
7 <sup>TH</sup> AVE/MARION BLVD. @ 1 <sup>ST</sup> ST. & BLAIRSFERRY RD.	
MARION BLVD. & ARMAR DR.	
MARION BLVD. & TWIXTTOWN	
TWIXTOWN RD. & COLLINS RD. FRONTAGE RD.	
LINDALE DR. & BLAIRSFERRY RD.	
LINDALE DR. & W. 8 <sup>TH</sup> AVE. (CORNER )	
W. 8 <sup>TH</sup> AVE. BRIDGE	
10 <sup>TH</sup> ST. & 8 <sup>TH</sup> AVE.	
10 <sup>TH</sup> ST & 10 <sup>TH</sup> AVE/CENTRAL AVE.	
10 <sup>TH</sup> St. - 10 <sup>th</sup> Ave to 8 <sup>th</sup> Ave.(parking area)	
10 <sup>TH</sup> ST. & INDAIN CREEK RD.	
10 <sup>TH</sup> ST. & 29 <sup>TH</sup> AVE.	
10 <sup>TH</sup> ST. & BOYSON ROAD	
29 <sup>TH</sup> AVE. & INDIAN CREEK RD.	

**SNOW ROUTE PRIORITY INTERSECTIONS**

SOUTH SIDE LOCATION	CLEARED
MUNIER RD. & HWY. 100	
HWY. 100 & 44 <sup>TH</sup> ST.	
HWY. 100 & EAST POST RD.	
HWY. 100 @ S. 22 <sup>ND</sup> ST. NORTH SIDE	
Menard LN. & HWY 100	
OAK LN. & HWY 100	
A- AVE. & S. 15 <sup>TH</sup> ST.	
S.11 <sup>TH</sup> ST. & GRAND AVE.	
11 <sup>TH</sup> ST. & 6 <sup>TH</sup> AVE.	
1 <sup>ST</sup> ST. & 6 <sup>TH</sup> AVE.	
1 <sup>ST</sup> . ST. & 7 <sup>TH</sup> AVE. / MARION BLVD.	
7 <sup>TH</sup> AVE/MARION BLVD. & BLAIRSFERRY RD.	
ARMAR DR. & MARION BLVD.	
TWIXTOWN & MARION BLVD.	

CUL-DE-SACS  
CITY OF MARION PUBLIC SERVICES







<b><u>Purple Zone</u></b>	<b>Cul-De-Sac Route</b>		
<b>Residential Area</b>	<b>Location</b>	<b>Plowed By</b>	<b>Time</b>
2	Dry Creek Lane		
2	W14 <sup>th</sup> Ave		
3	Quiver Ct		
3	Crossbow Ct		
3	Timber Oak Ct		
3	Plumwood Ct		
3	Ashwood Ct		
3	Acacia Ct		
3	Edinburgh Place		
3	Westminster Place		
3	Buckingham Place		
3	Hawks Ridge Ct		
3	Mulberry Ct		
3	Morel Ct		
3	Bedford Ct		
3	Antrim Ct		
3	Carriage Ct		
3	Heather Ct		
3	Elshire Ct		
3	Partridge Ct		
5	Larick Ct		
5	Woodbine Ct		
4	33rd Ave, 7 <sup>th</sup> & 8 <sup>th</sup> Streets		
4	Barrington Ct		
4	W 34 <sup>th</sup> Ave Ct		
4	Irish Ct		
4	Smithland Ct		
4	Waveland Ct		
4	Tramore Ct		
4	Paririe Trail Ct		
4	Silver Ridge Ct	New off Alburnett Rd west of School	

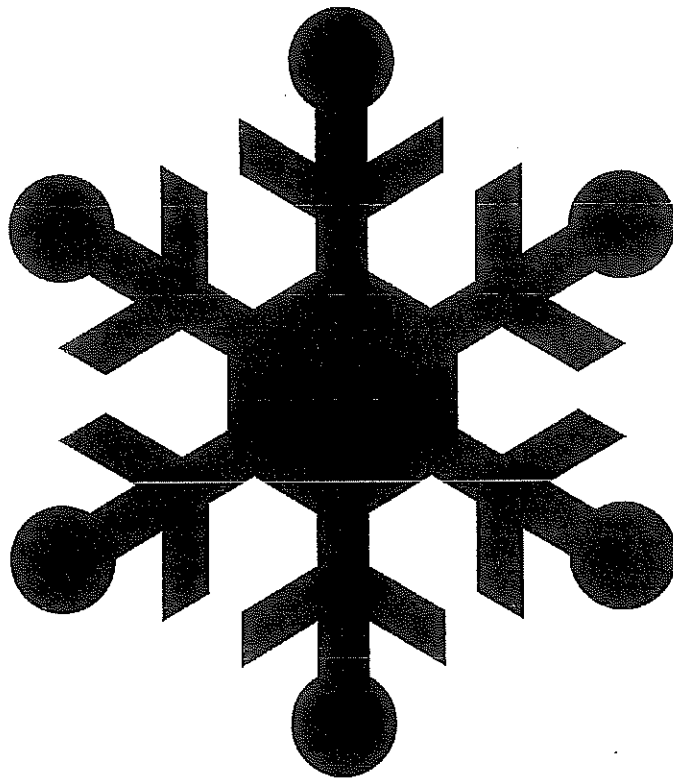


<b><u>Green Zone</u></b>	<b>Cul-De-Sac Route</b>		
<b>Residential Area</b>	<b>Location</b>	<b>Plowed By</b>	<b>Time</b>
1	35 <sup>th</sup> St Ct		
1	Jonquil Ct		
1	Parkcrest Ct		
1	Charleston Ct		
1	Kings Ct		
1	Monarch Ave / Empire St		
1	Royal Ave		
1	43 <sup>rd</sup> St Ct		
2	Canvasback Ct		
2	Pike Ct		
2	Cambridge Ct		
2	Kimberly Ct		
2	Windsor Ct		
2	Coventry Ct		
2	Rosewood Ridge Ct		
2	Dostal Ct		
2	Fox Hollow Ct		
2	Brandon Ct		
2	Lancing Ct		
2	Canton Ct		
2	Ivy Ct		
3	48 <sup>th</sup> St Ct		
3	49 <sup>th</sup> St Ct		
3	Prairie Hill Ct		
3	Tamerac Circle		
3	Cope Dr West end		
3	Bison Ct		
3	Chandler Ct		
3	Commercial Ct		
4	3 <sup>rd</sup> Ave Ct.		

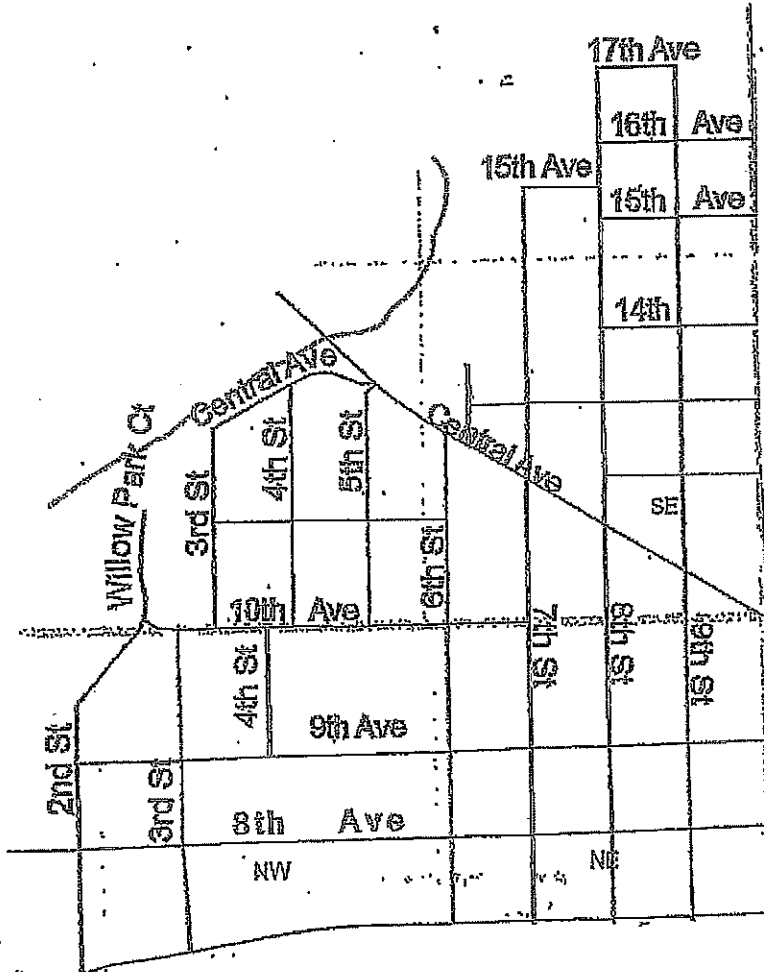




RESIDENTIAL SNOW REMOVAL MAPS  
CITY OF MARION PUBLIC SERVICES .

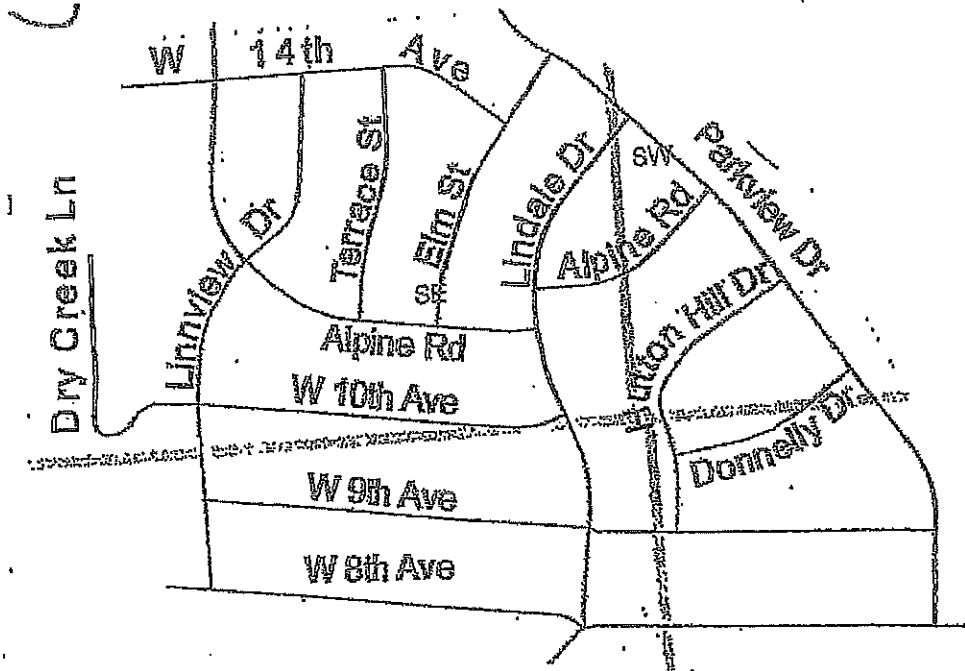


# Purple 1

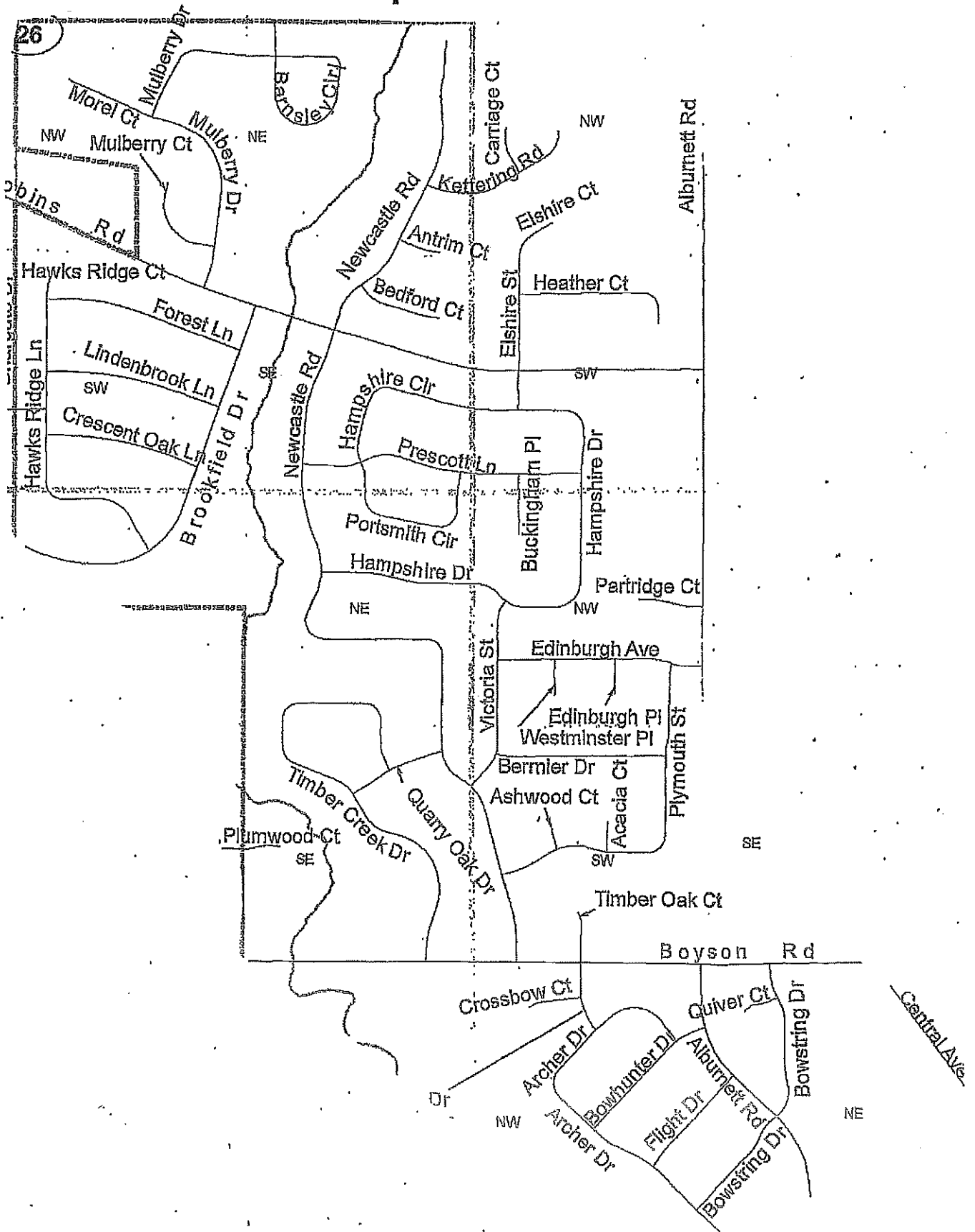


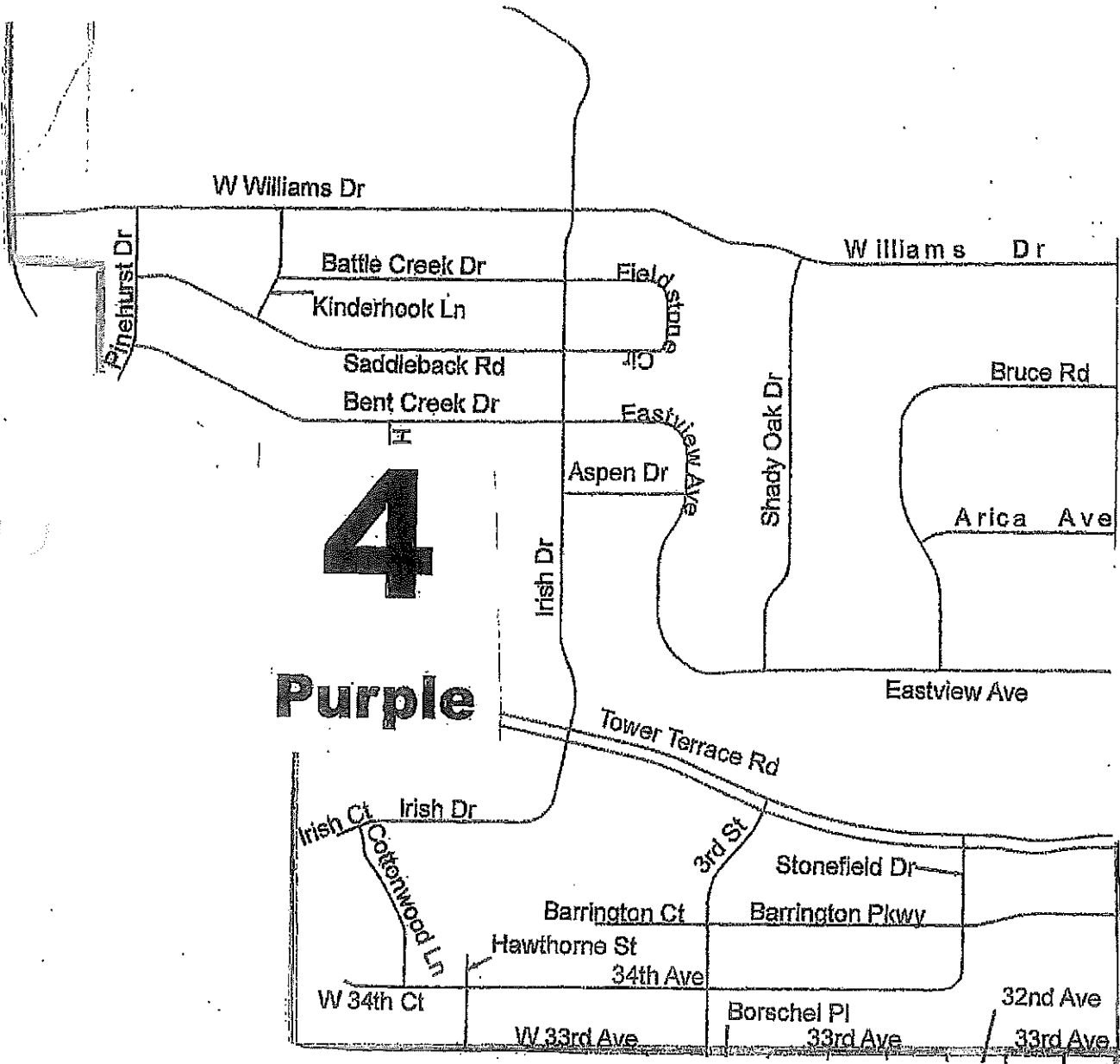


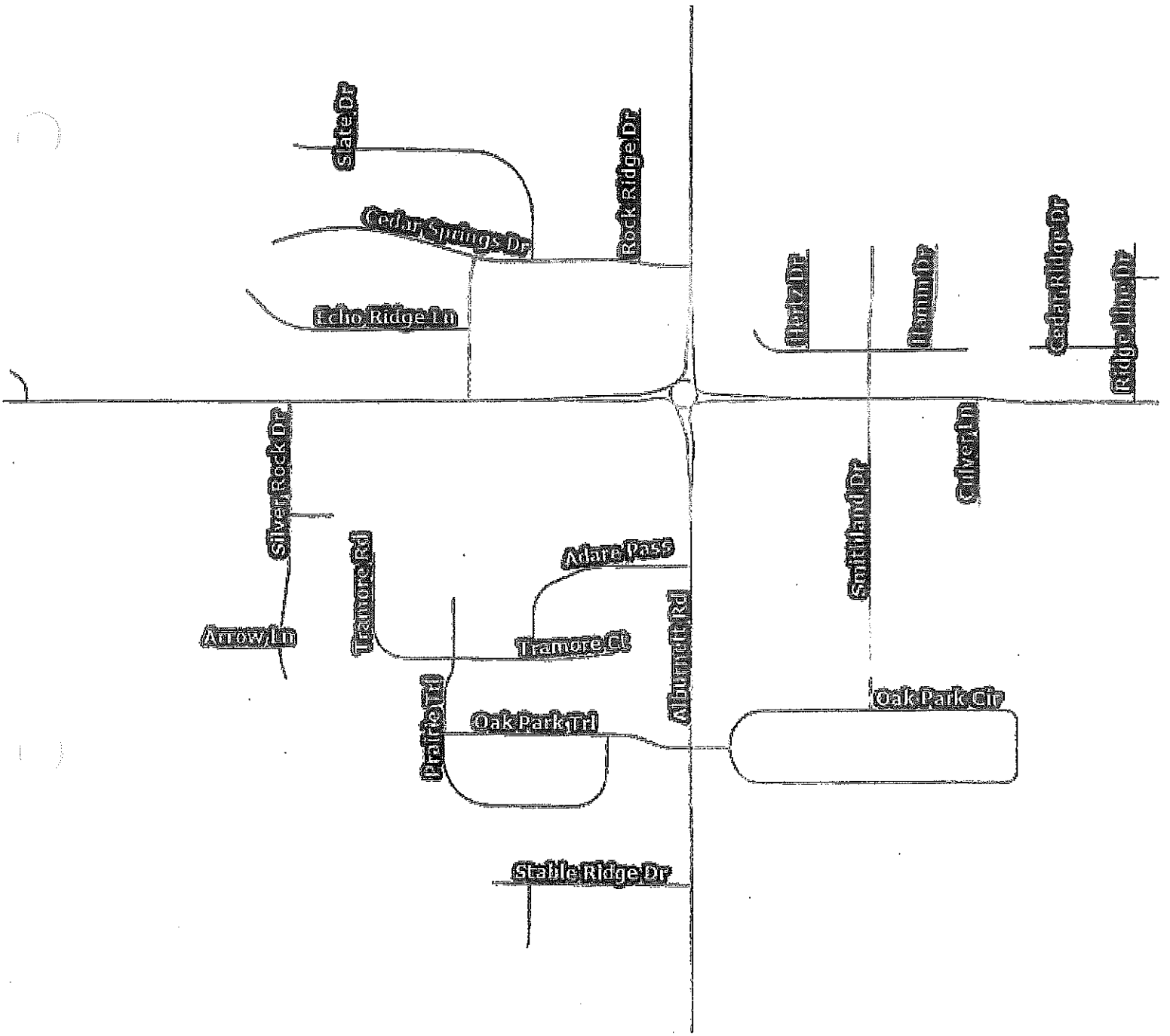
# Purple 2



# Purple 3

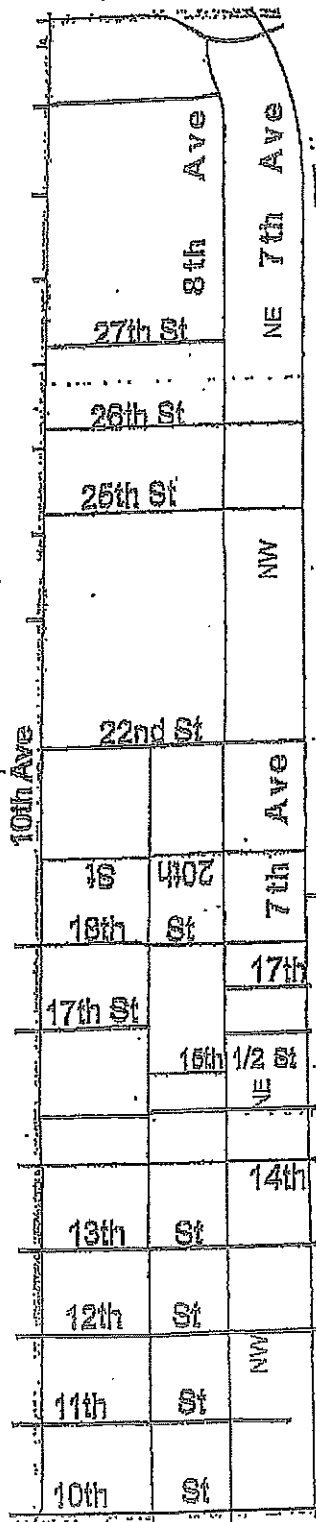




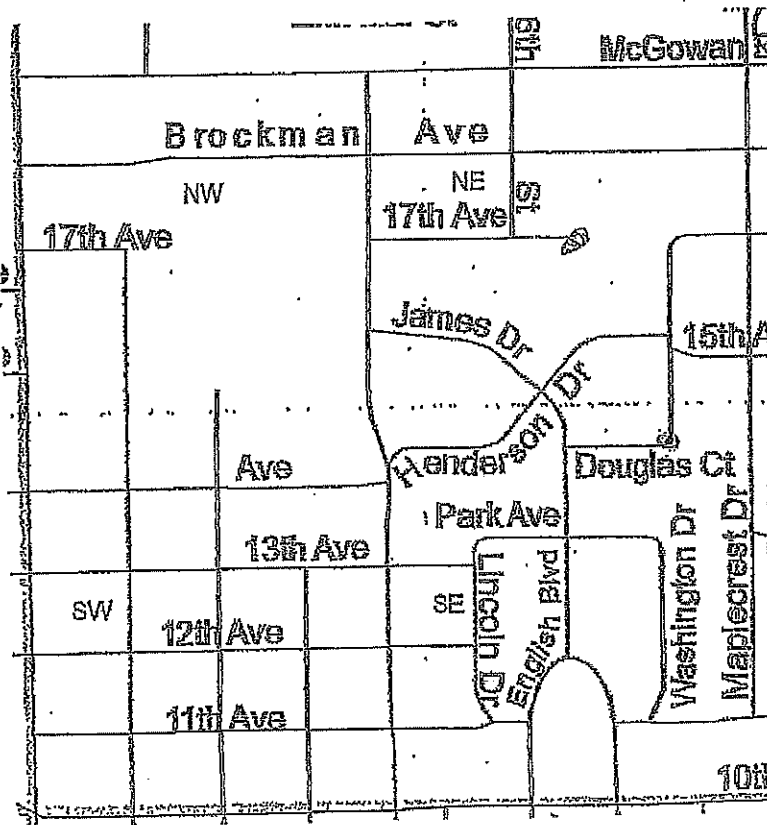


Purple 4

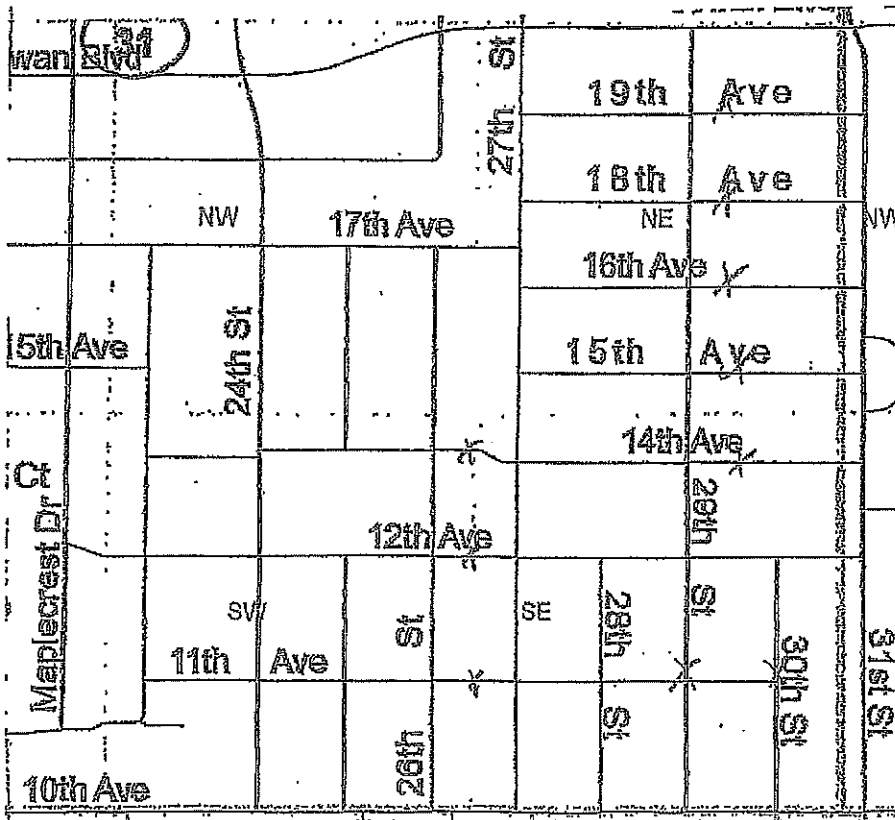
# Blue 1

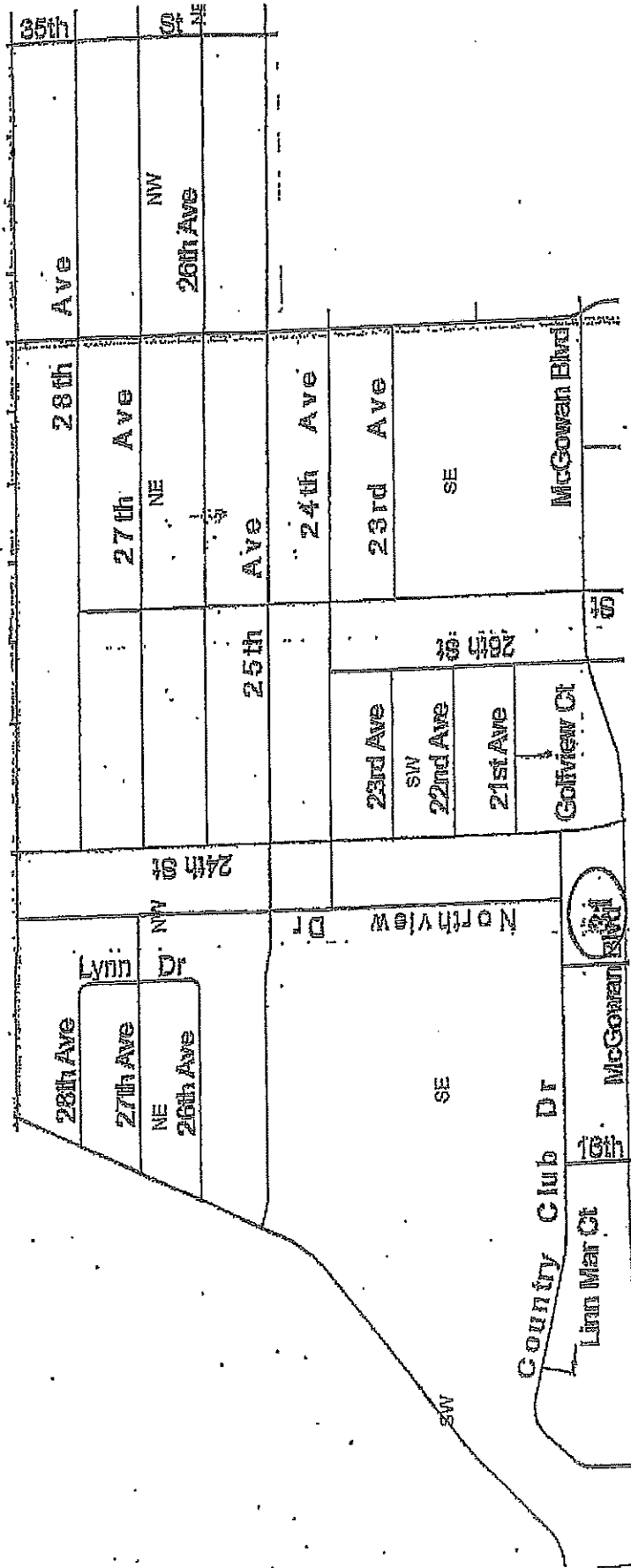


# Blue 2



# Blue 3



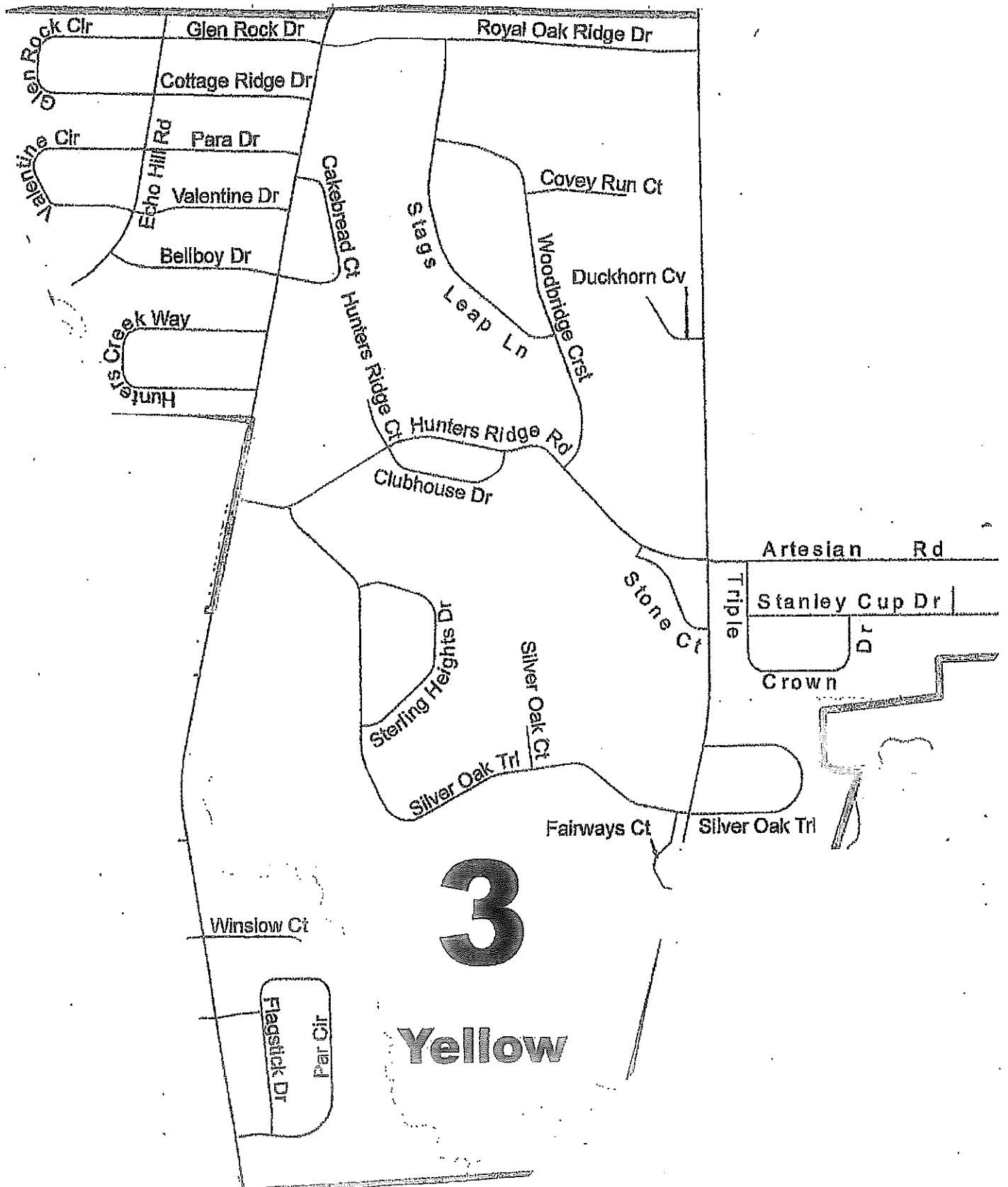


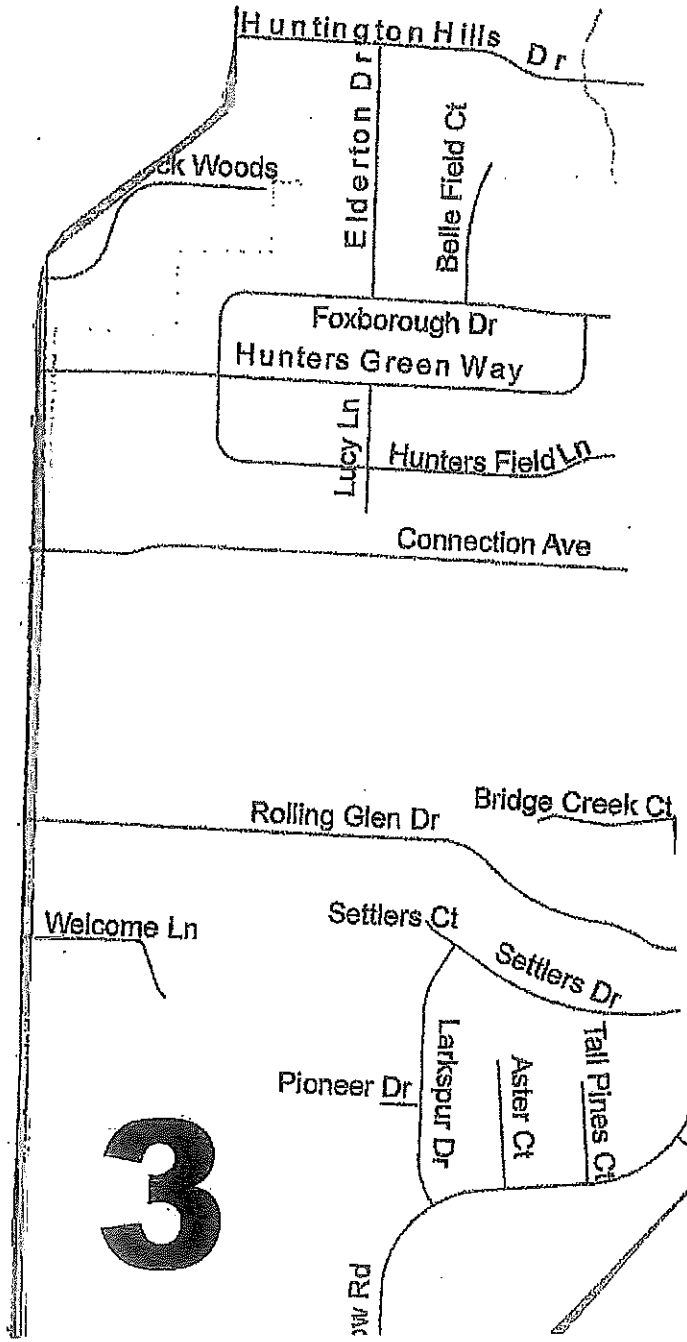
Yellow 1



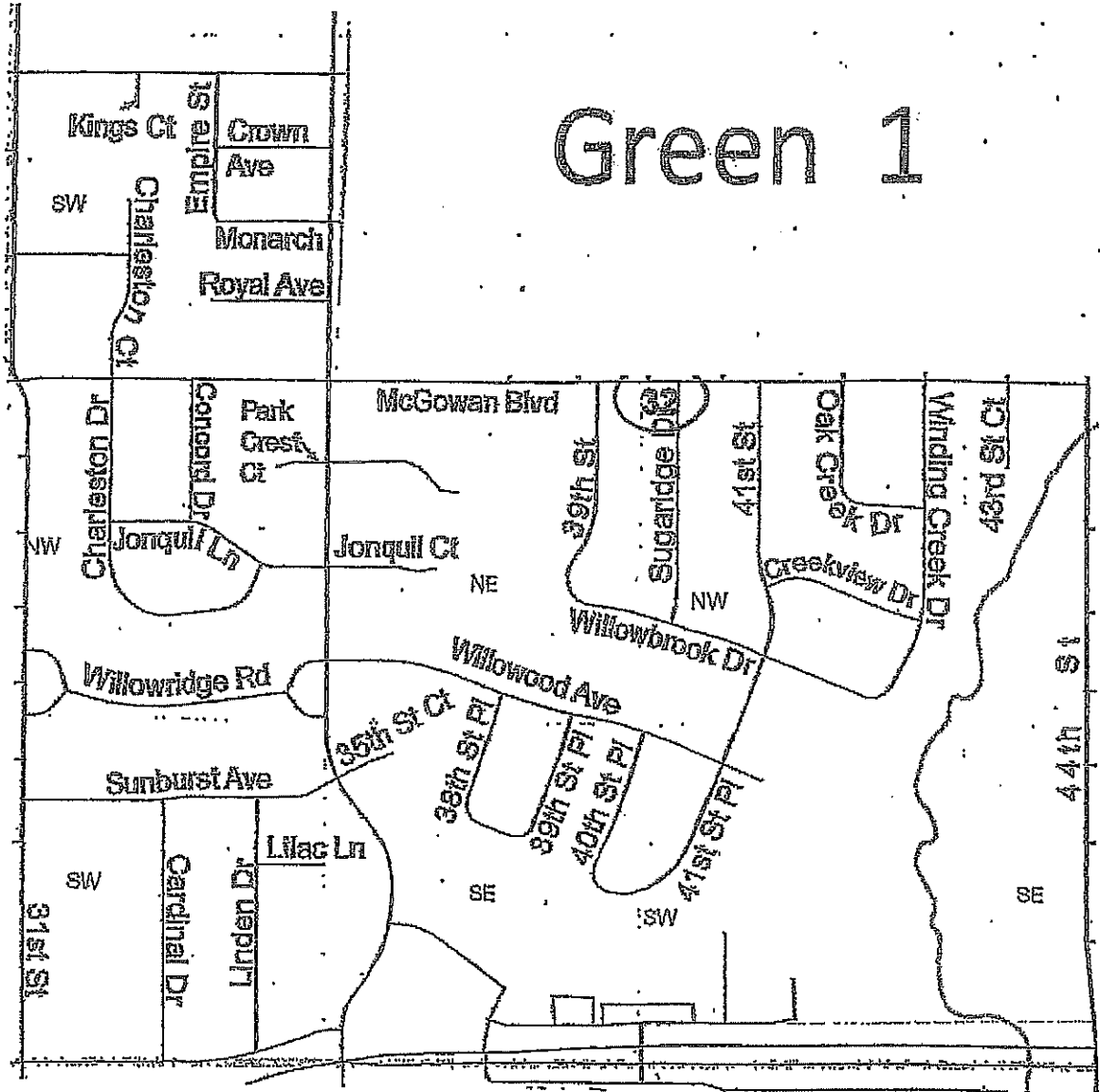


Yellow 2

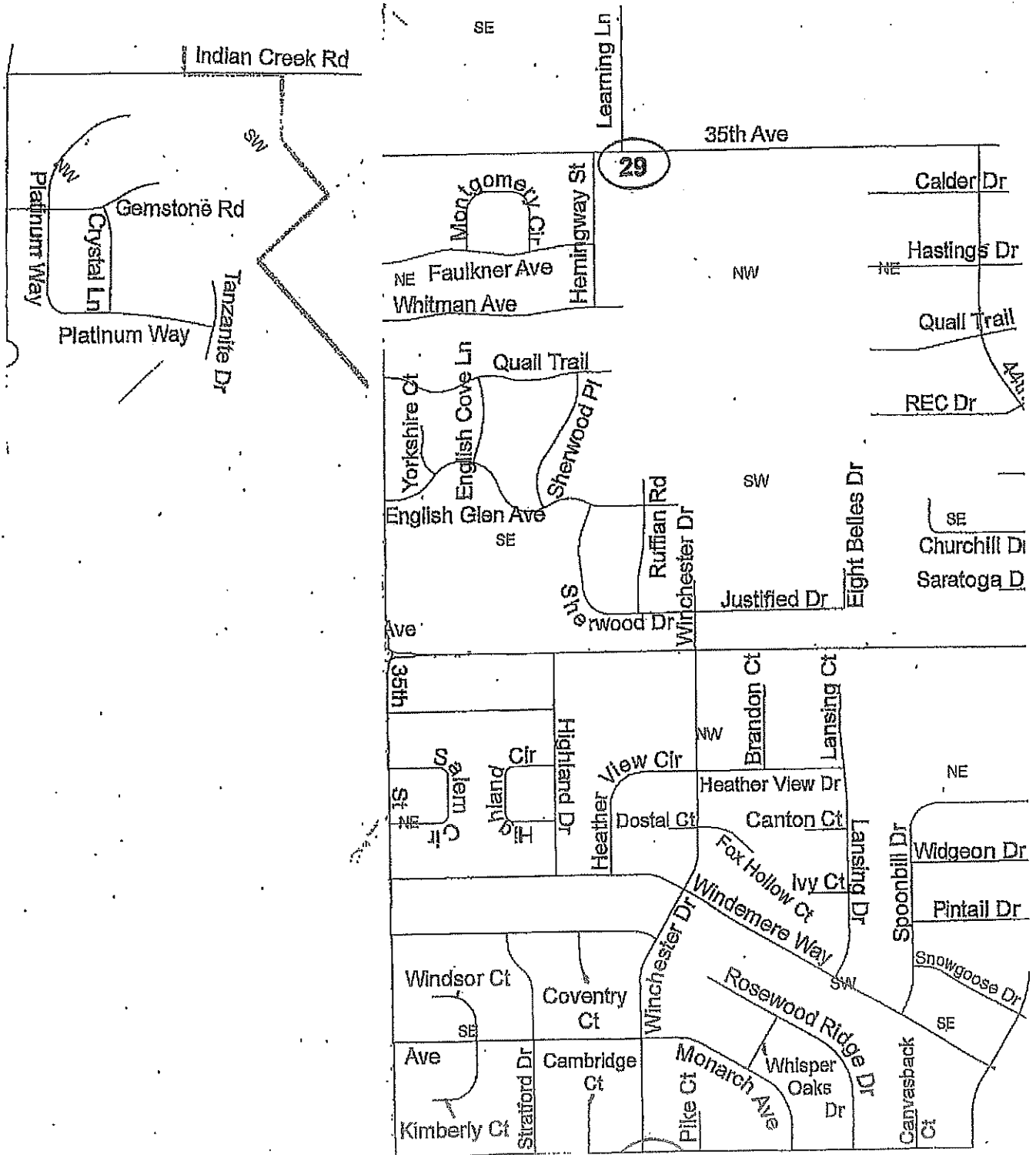


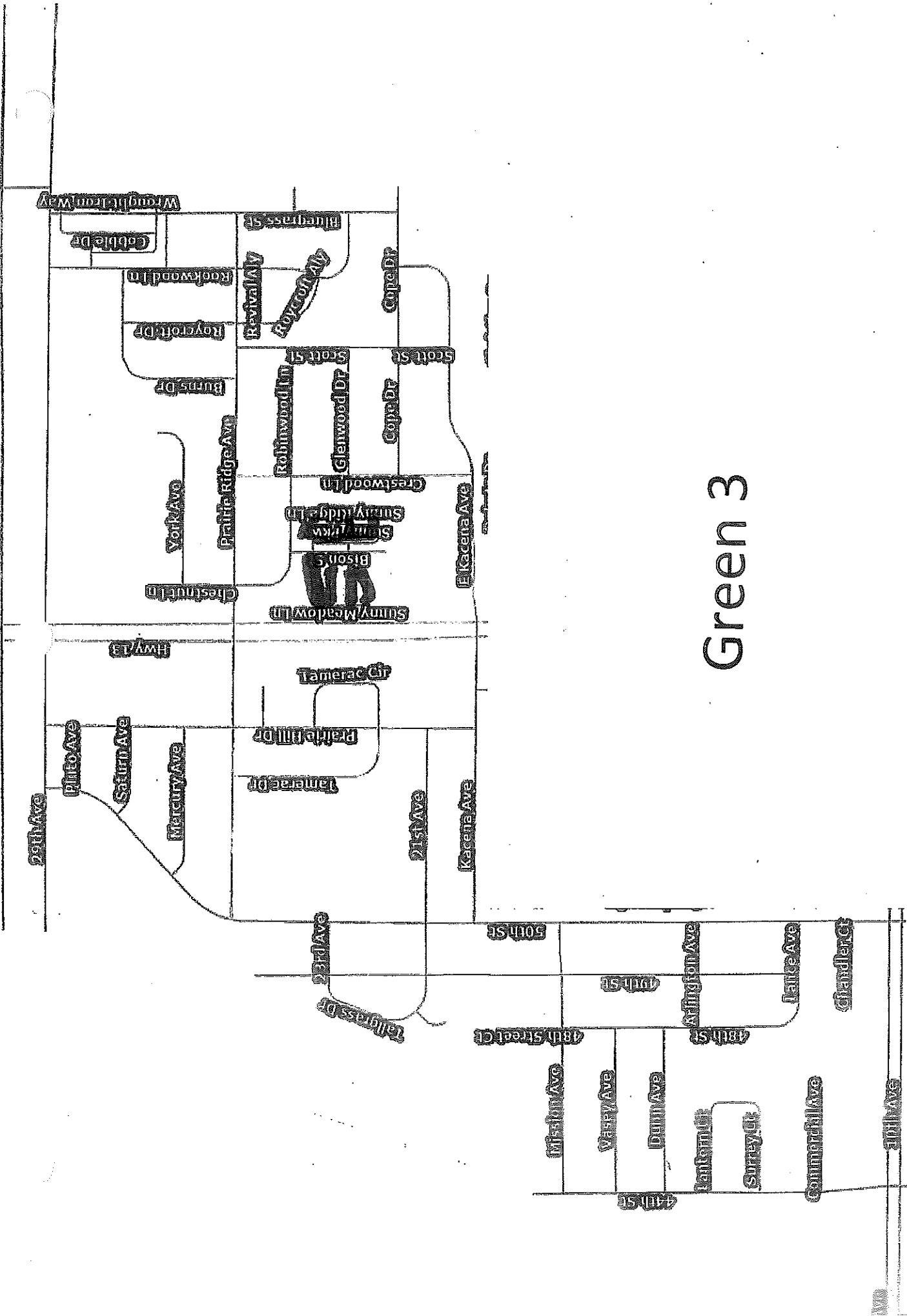


# Green 1

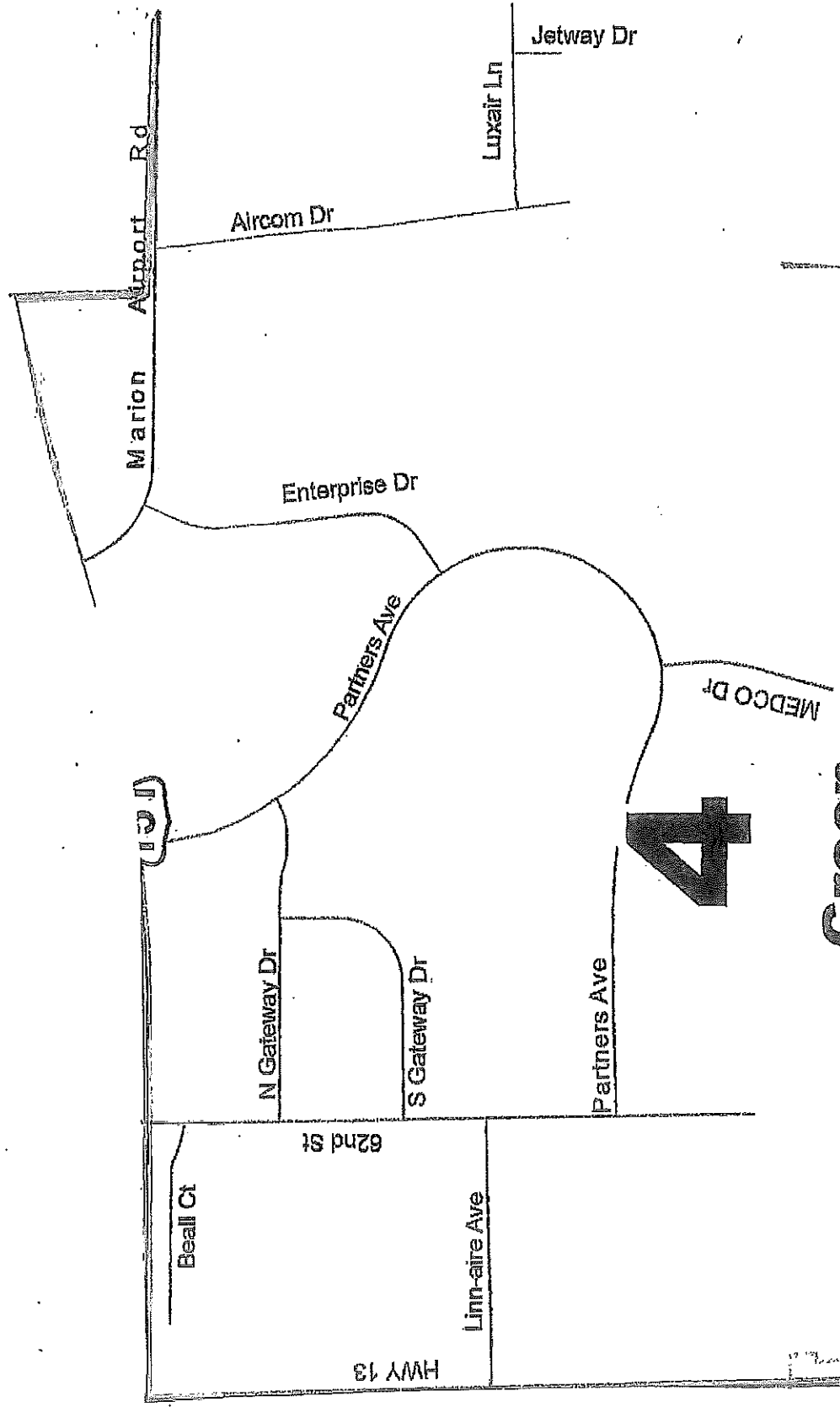


# Green 2



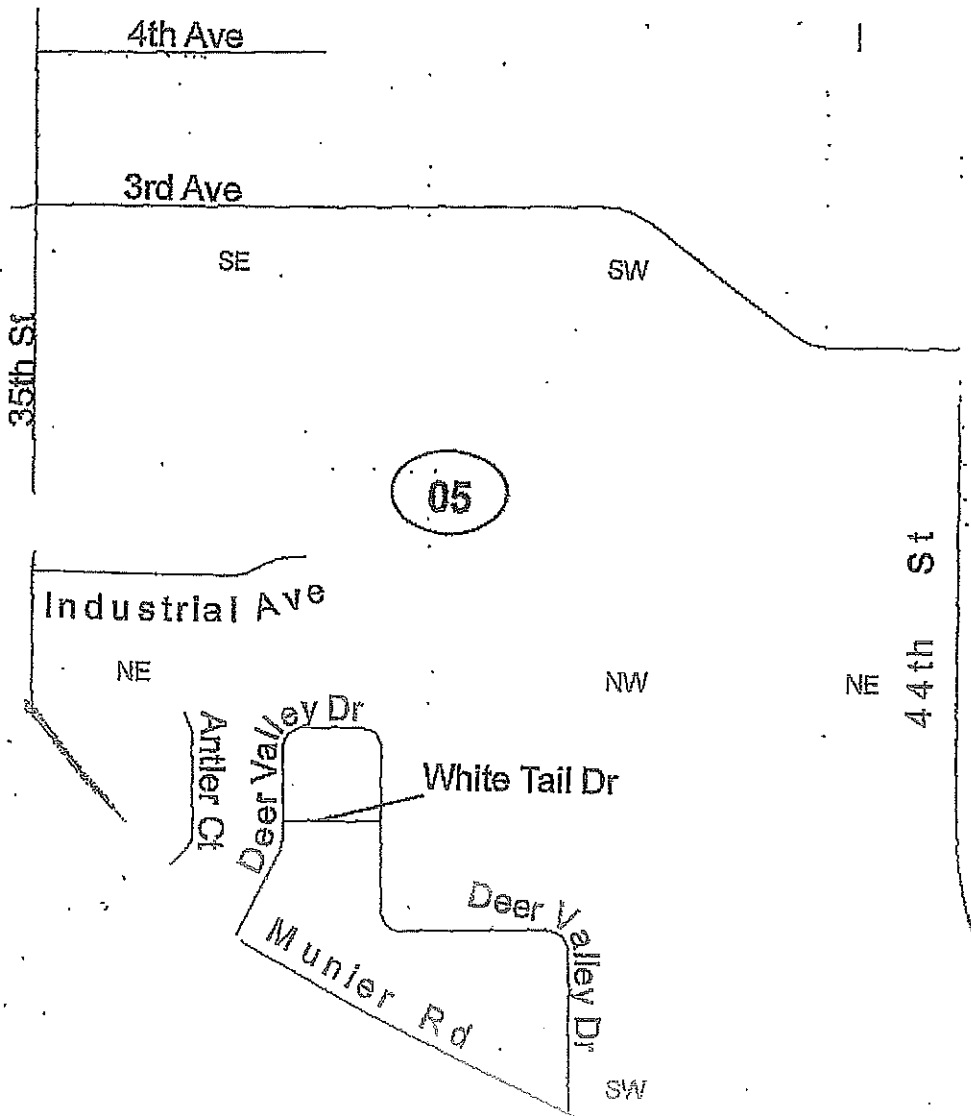
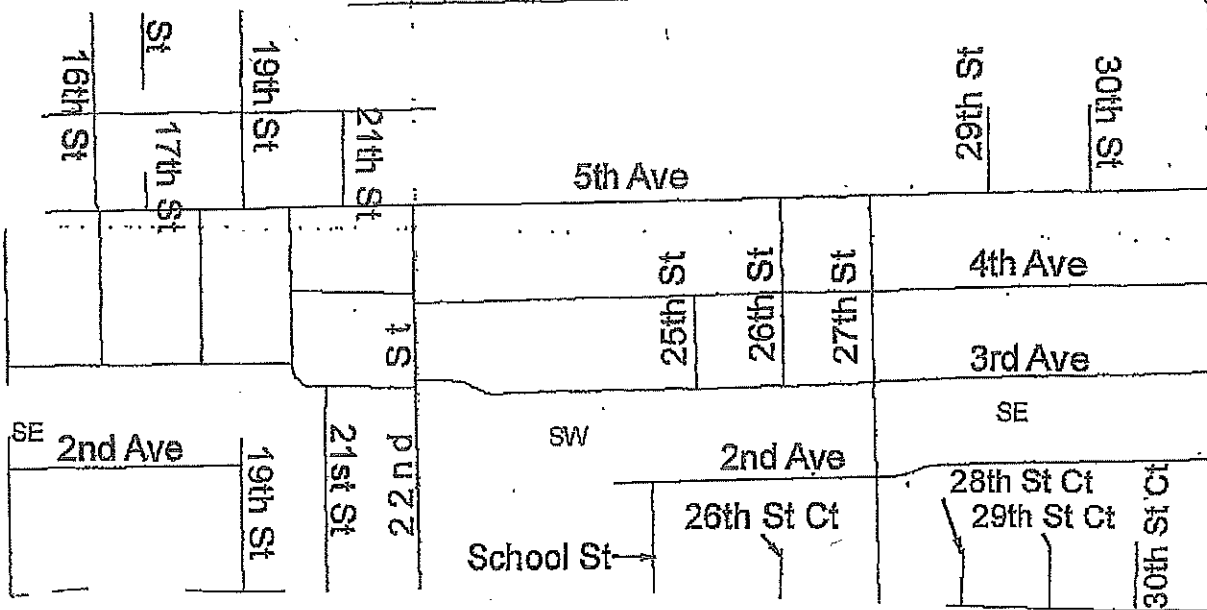


# Green 3



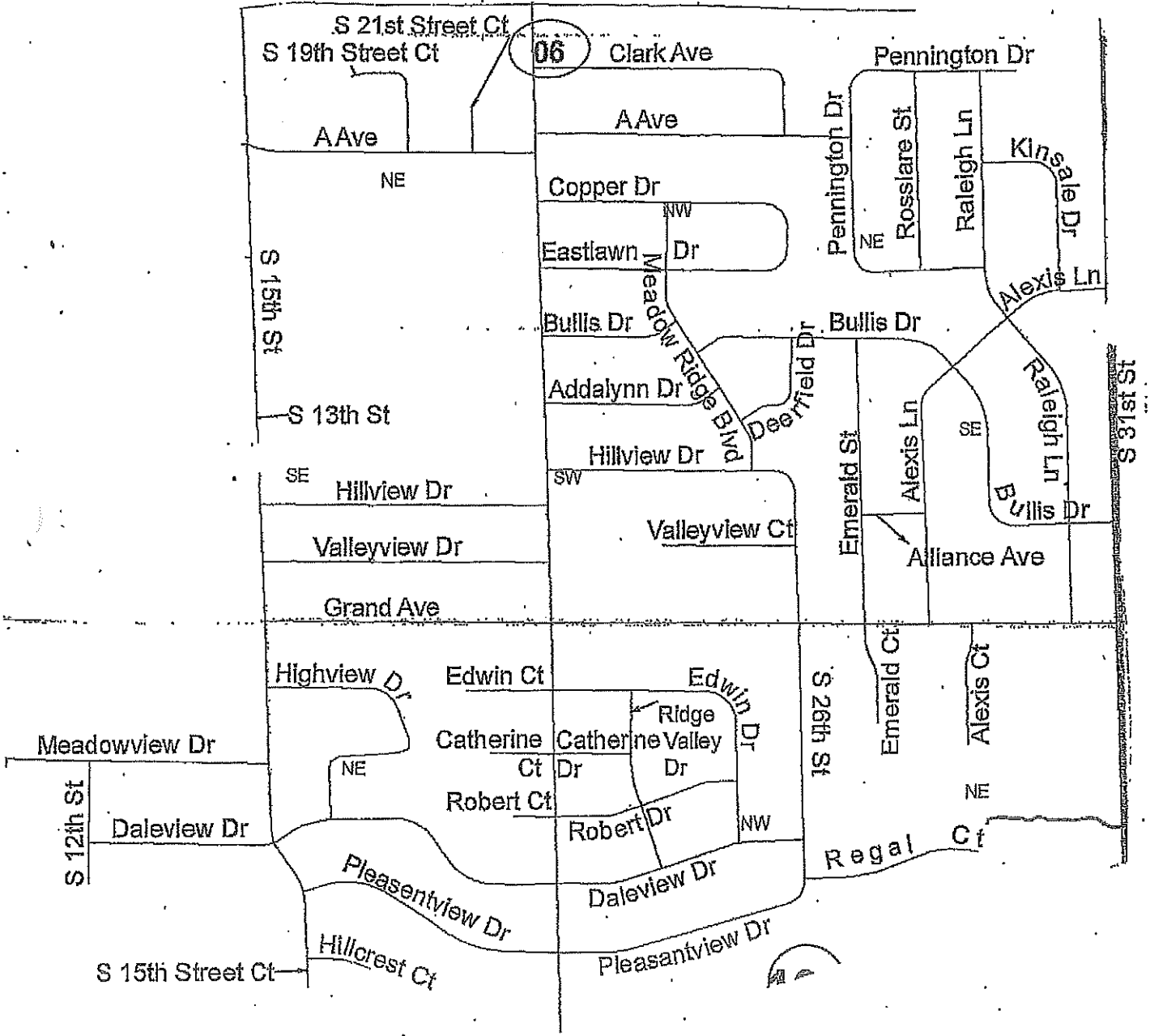
**Green**

# Pink 1

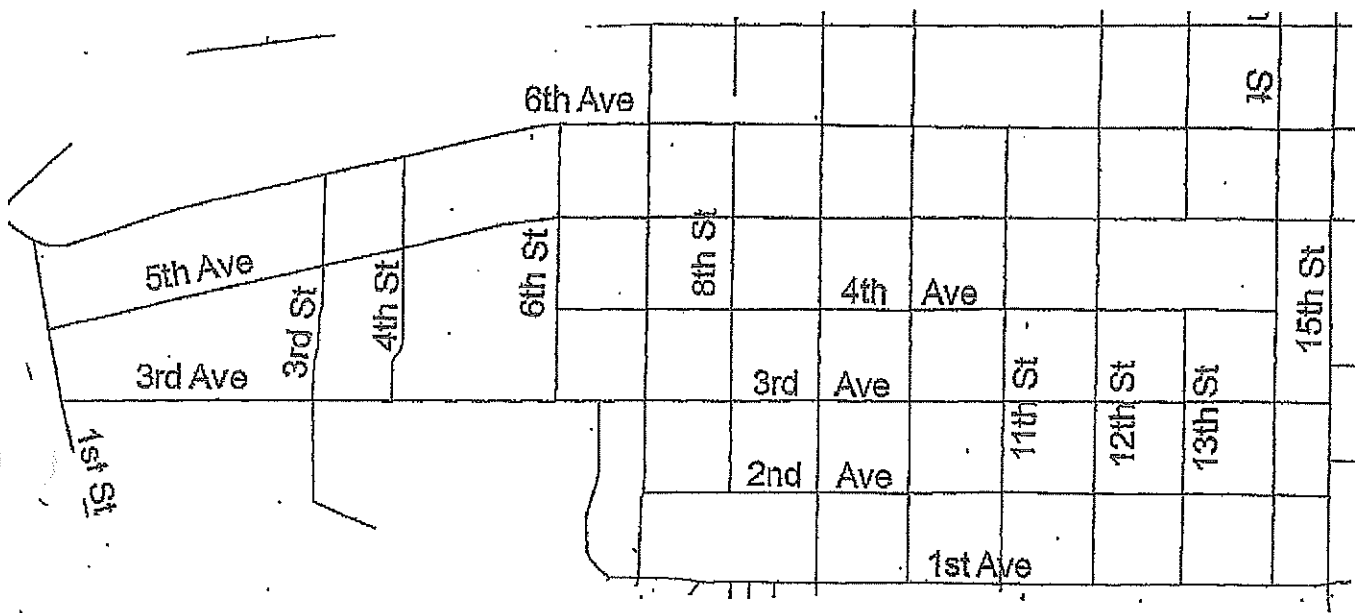


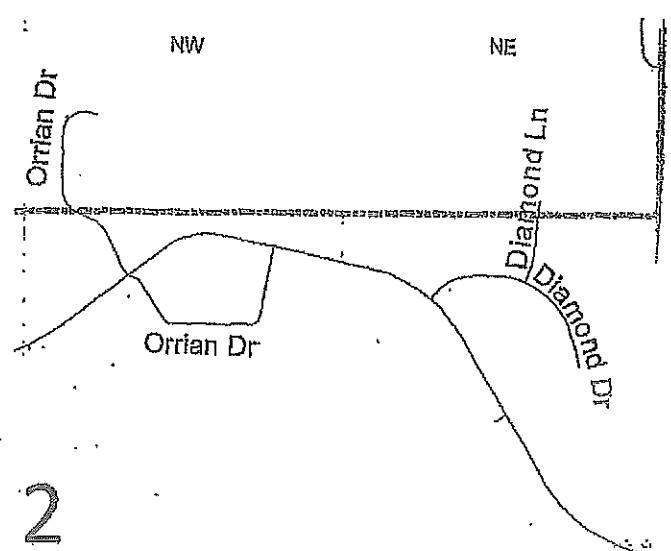
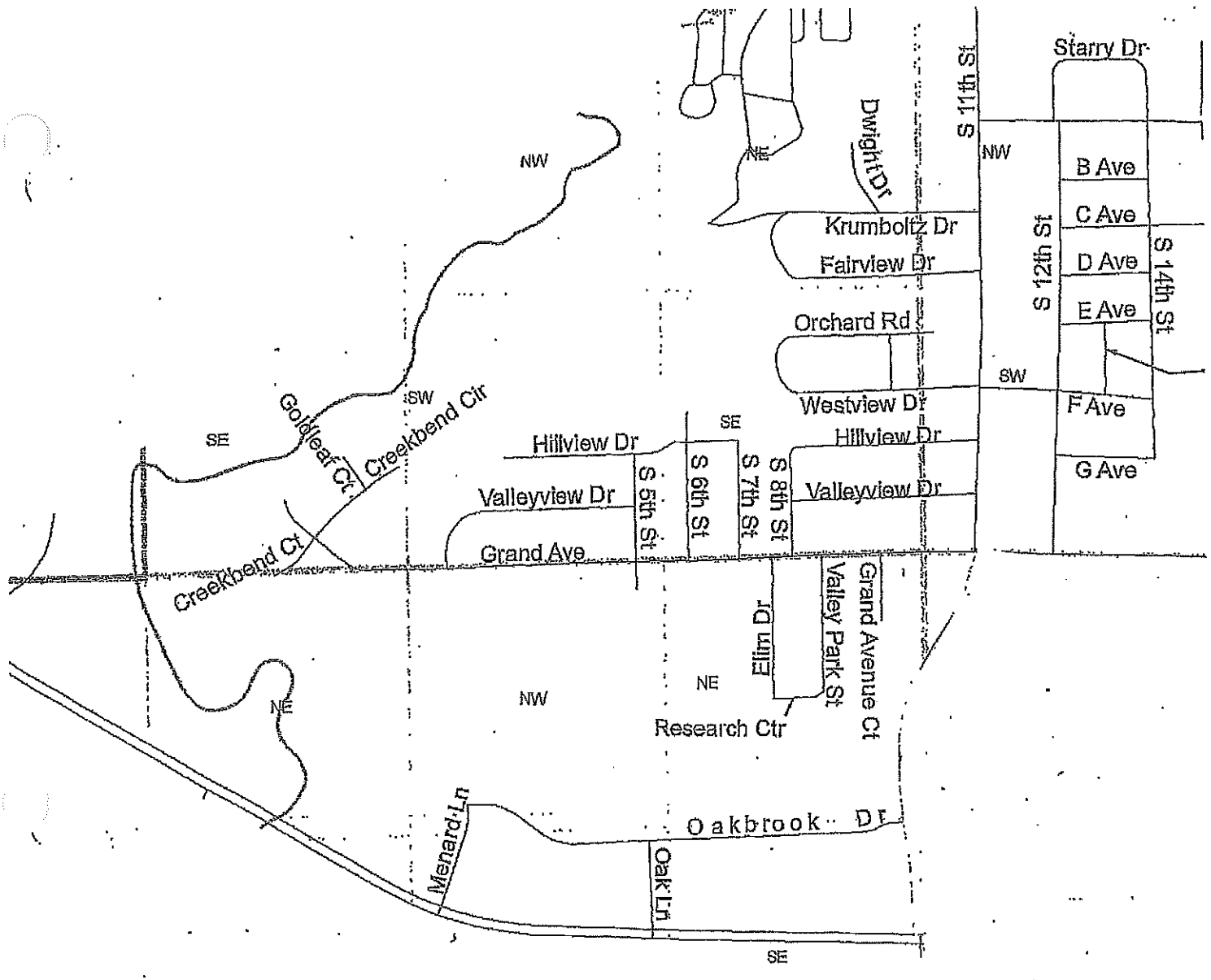


# Pink 2

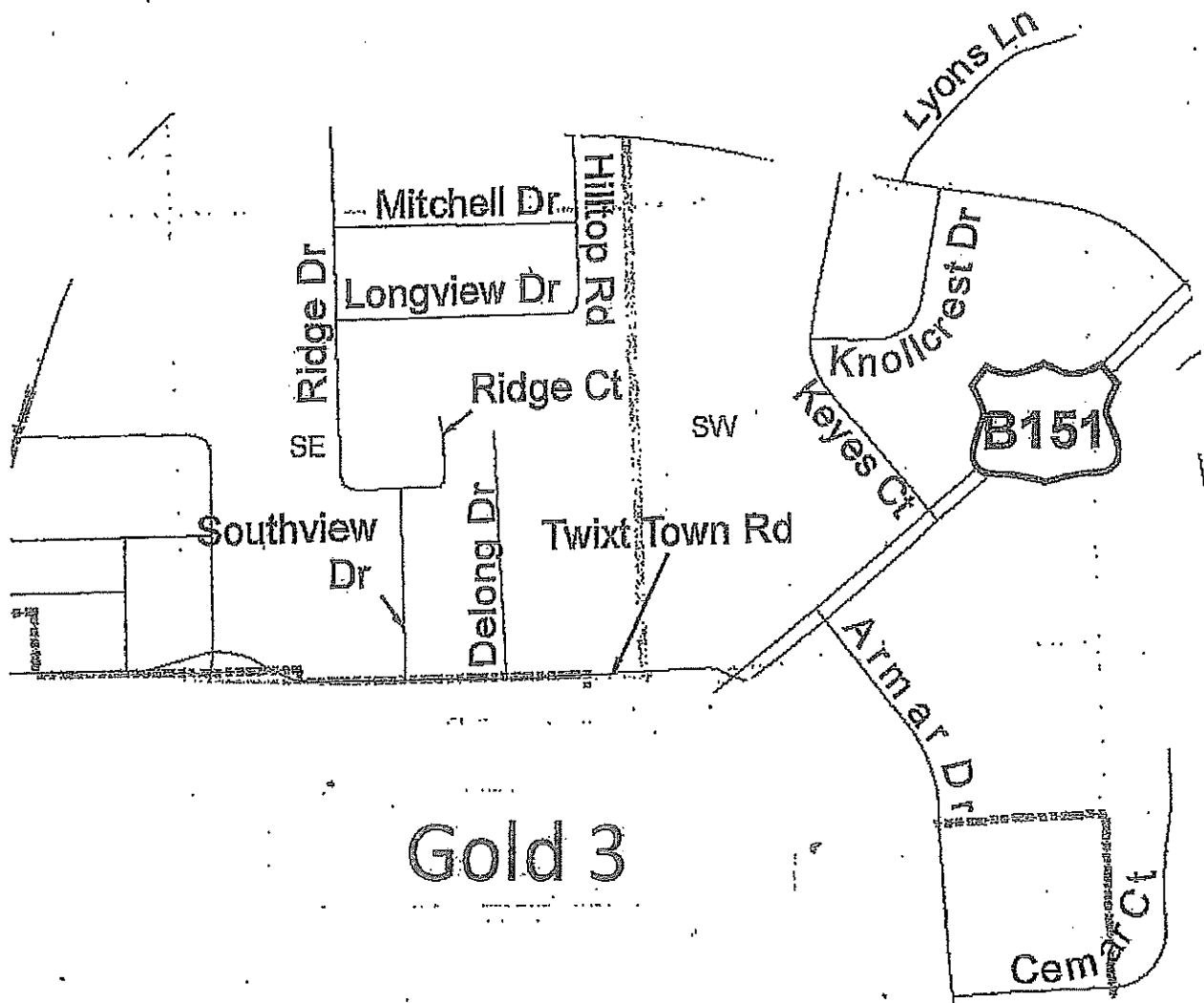


# Gold 1

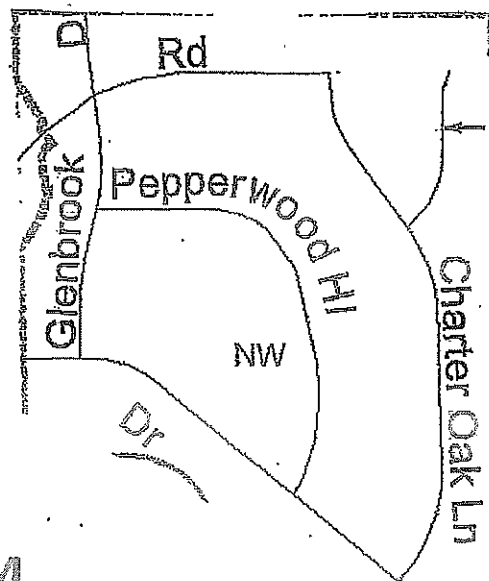




Gold 2



Gold 3



Gold 4